

Lower Kootenay Band Land Use Plan Information

To be used in reference to questions on the Land Use Plan Survey



Index

Index	2
Map Grid Description	3
Reference Maps	4-10
Creston Valley Wide Trail Network	11-12
Community/Worker Camp	13-14
Kainuko Lodge	15

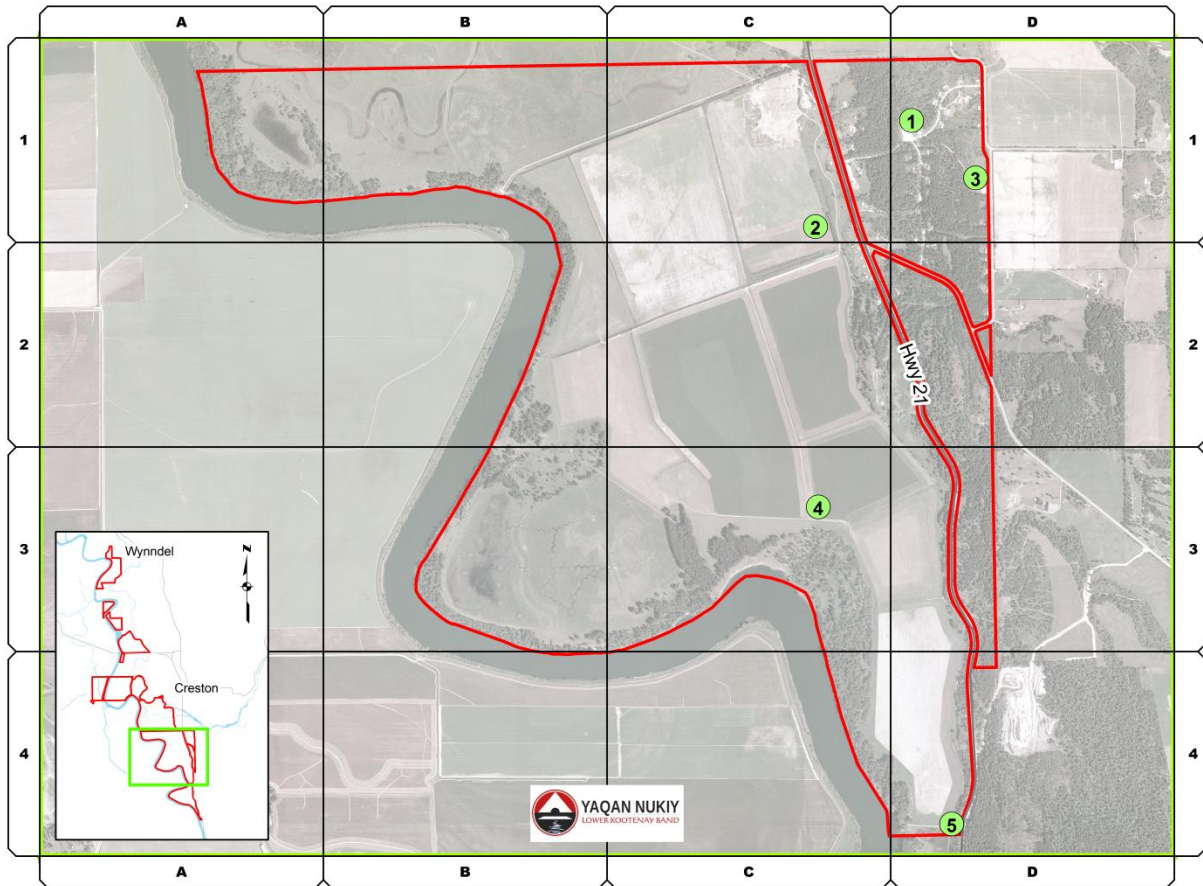
How to describe a place using the grid on the maps provided.

Point 1 (Gym/Band Office) and Point 3 (Ball Diamond) are located on the left side of section 1D.

Point 2 (Community Garden) is located on the bottom right of section 1C.

Point 4 (Corrals) is located on the top right of section 3C.

Point 5 (Entrance to South End) is located on the bottom left of section 4D.

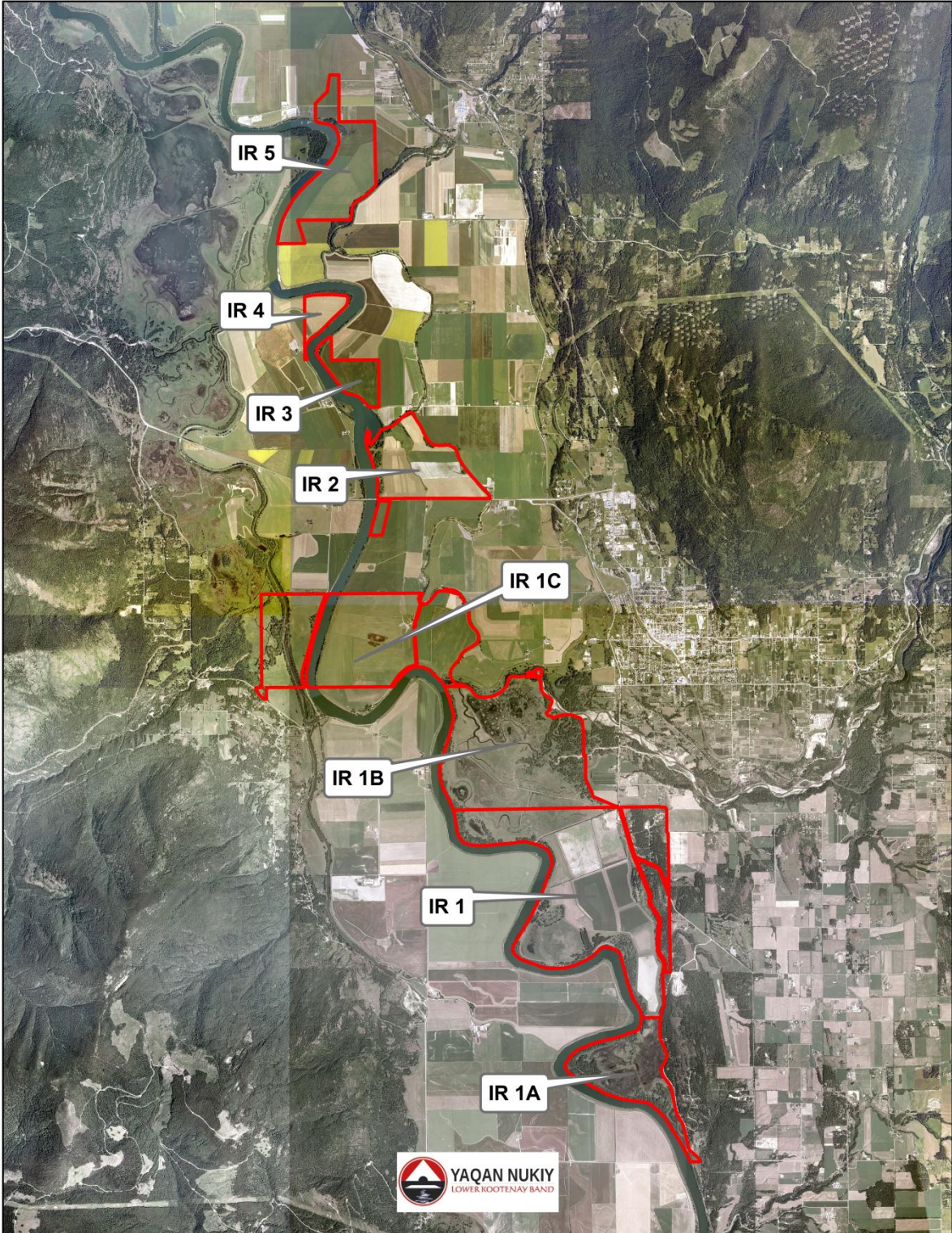


Lower Kootenay Band IR 1

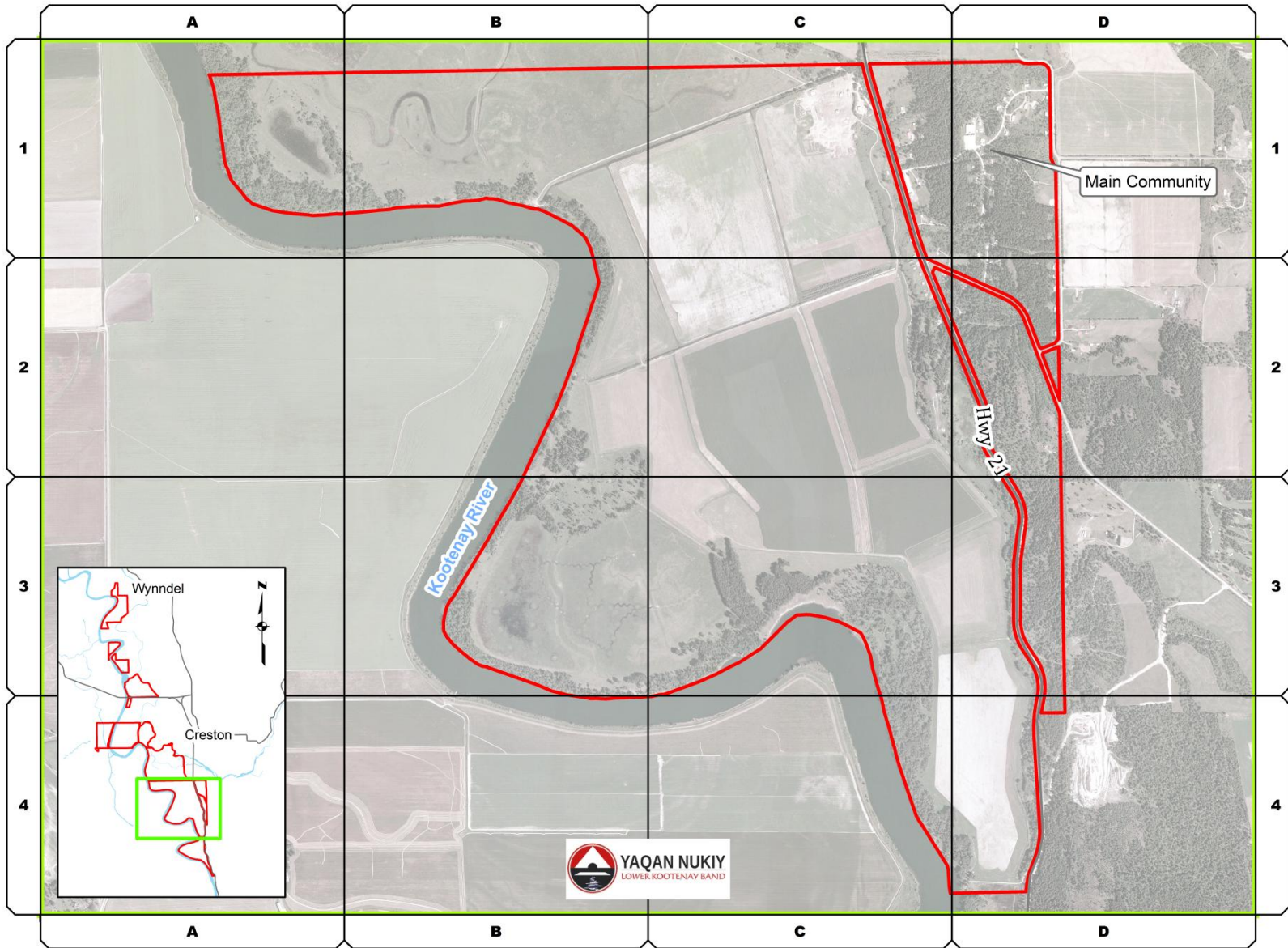
An example of the description of where Hidden Lake is and an idea would be,

The lake on the right of section 1A on map IR1, should be used for community picnics.

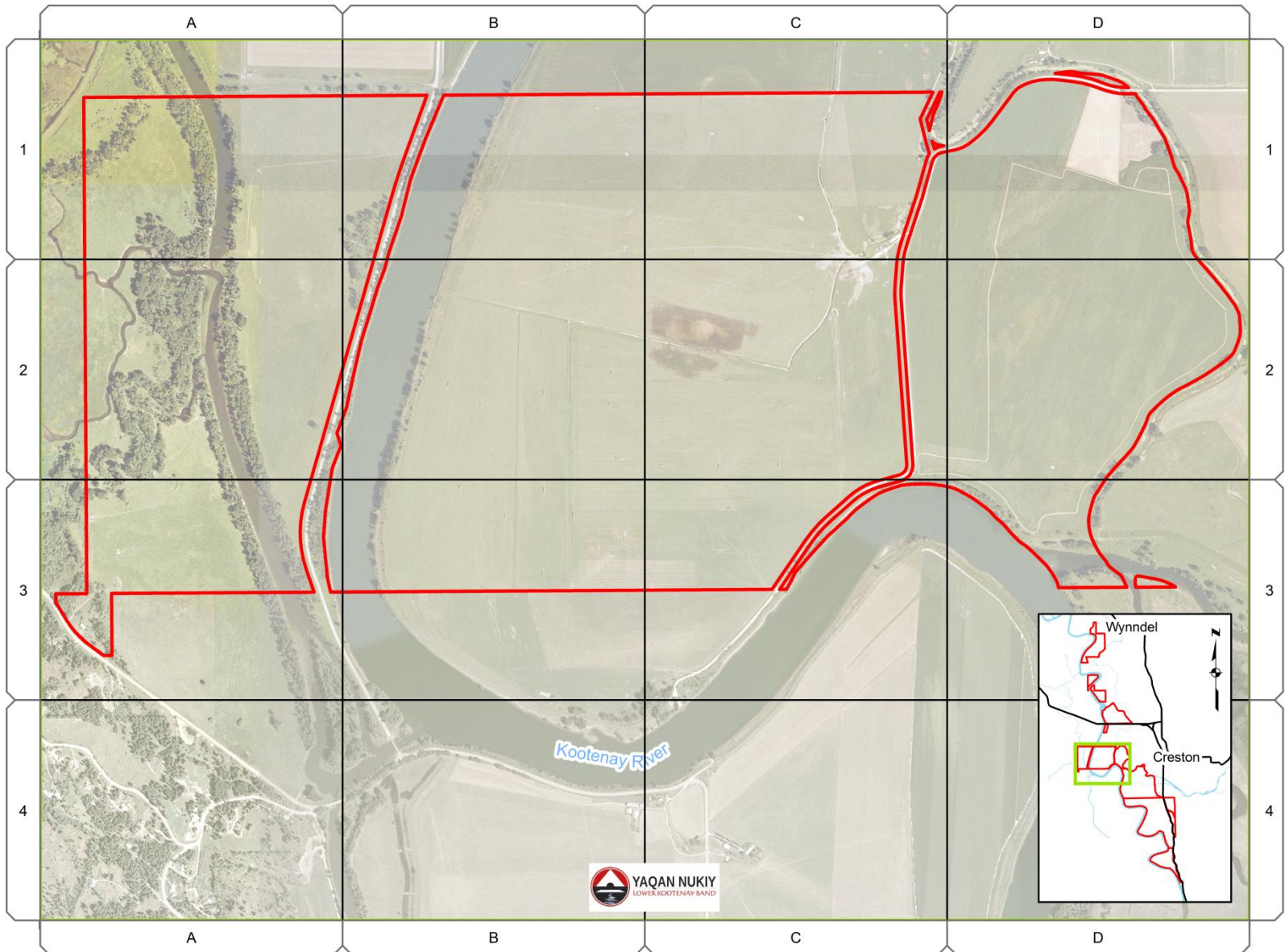
Please provide Your answers in the spaces provided in the survey.



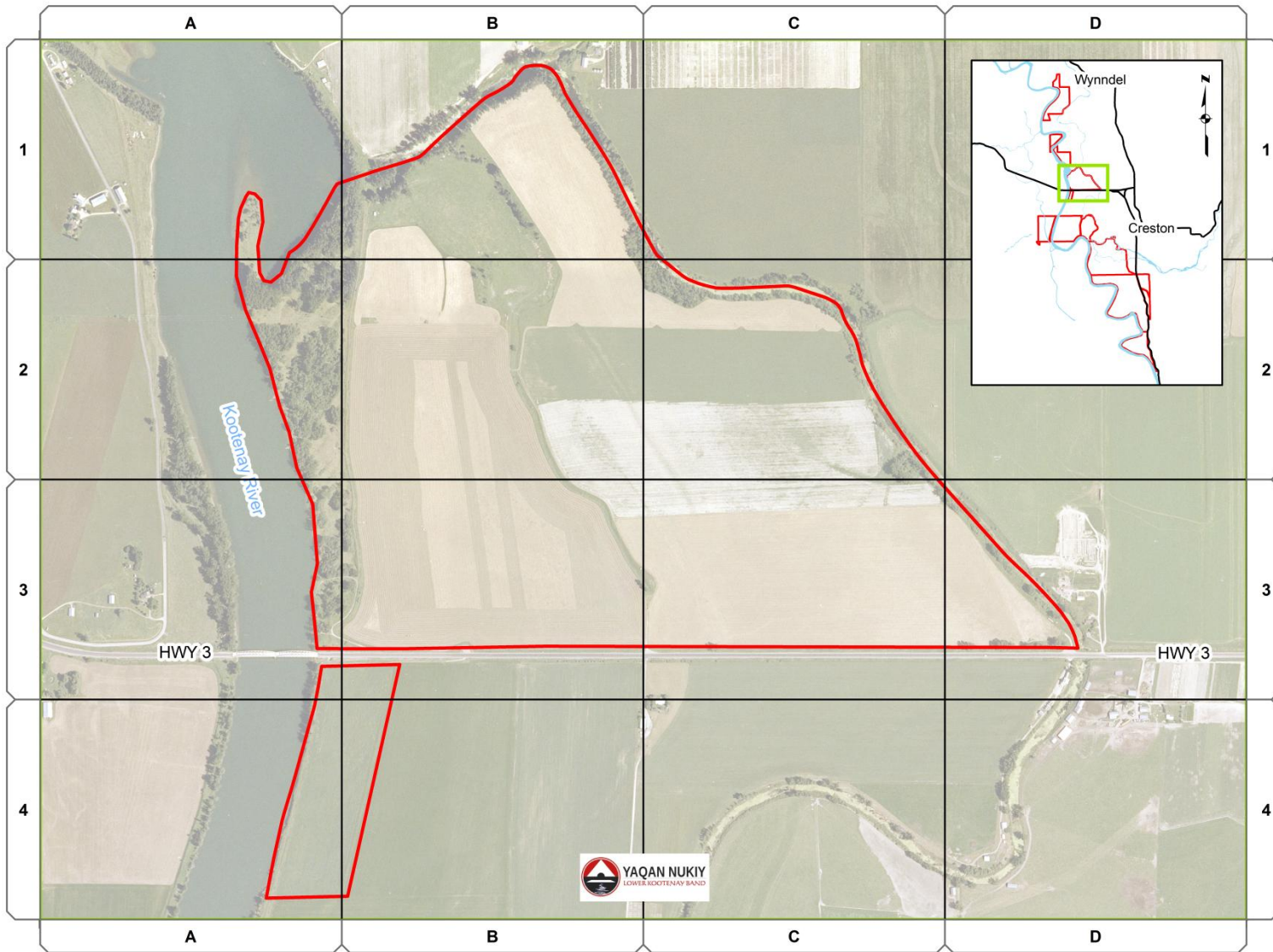
Lower Kootenay Band Reserve Outline



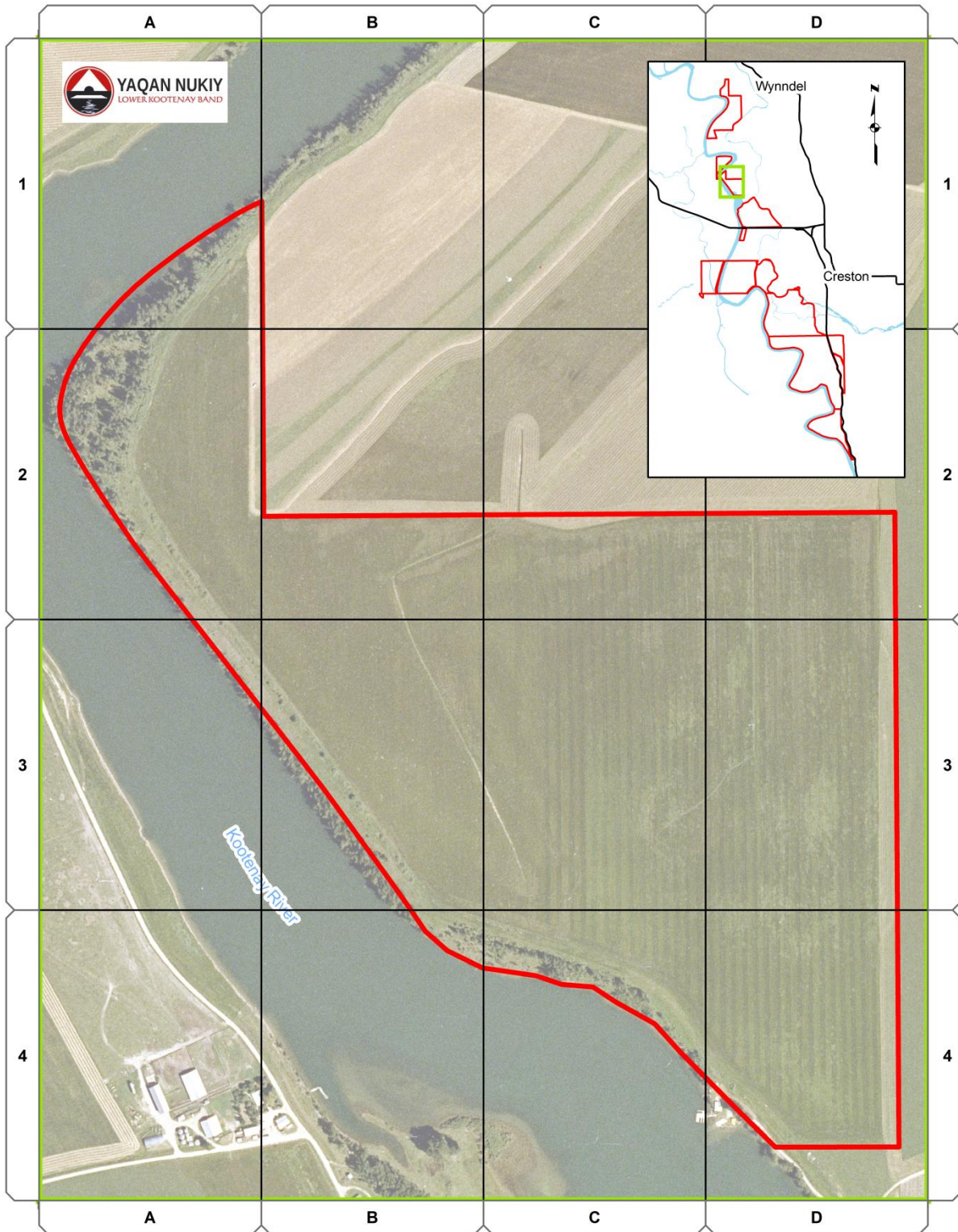
Lower Kootenay Band IR1



Lower Kootenay Band IR1C



Lower Kootenay Band IR2



Lower Kootenay Band IR3

Creston Valley Wide Trail Network

The Town of Creston, RDCK and LKB have had informal discussions regarding a “Creston Valley Wide” Trail Network. These discussions were initiated through the Town of Creston Official Community Plan process in the summer of 2016.

As part of the Lower Kootenay “Land Use Planning” community consultation process, the LKB leadership is seeking input from LKB citizens on whether they would support utilizing the “dikes” located on LKB reserve lands as part of a Valley Wide Trail Network.

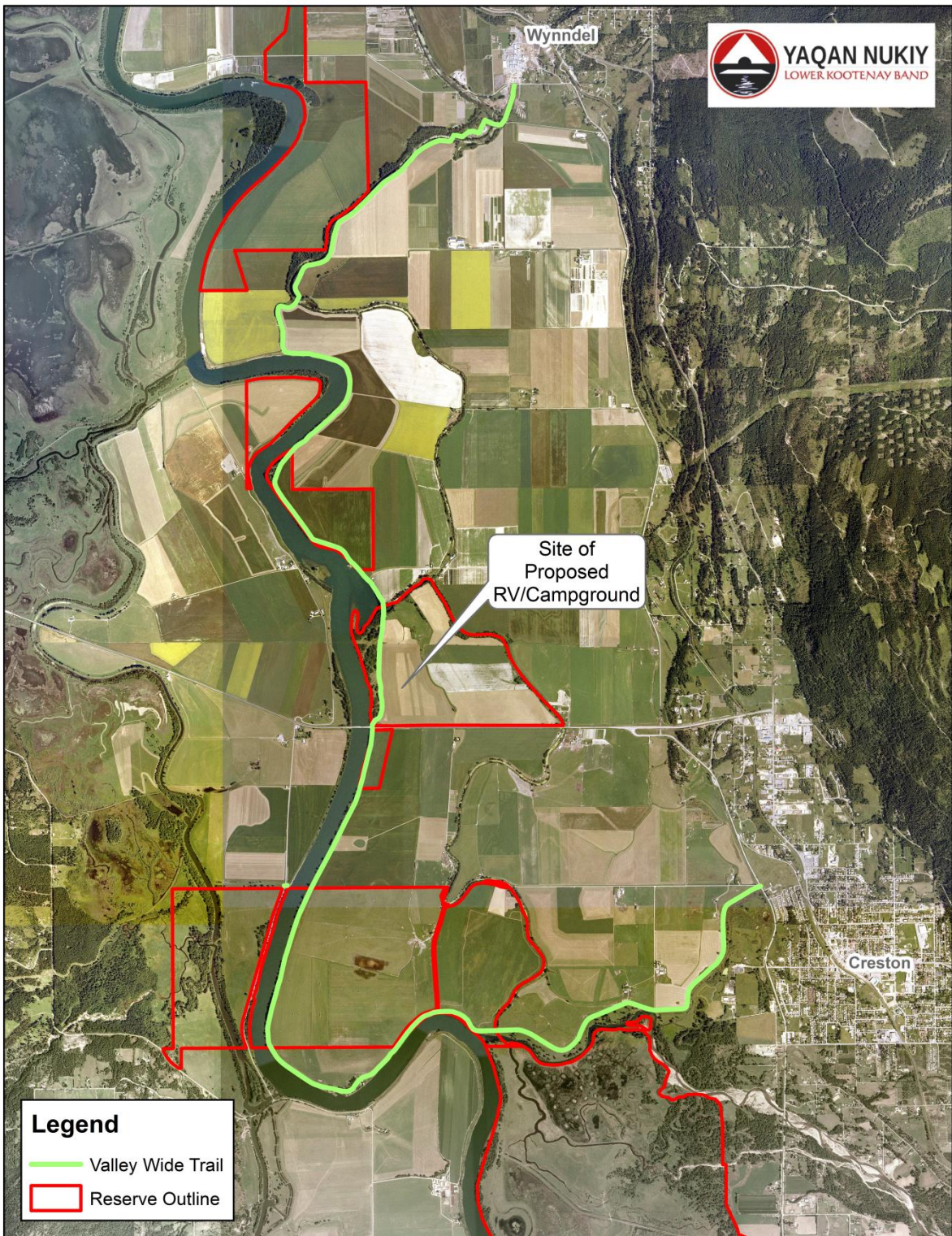
The public trail would begin at the junction of Highway 21 and the Kootenay Ferry Landing Road and follow the dikes across private land and LKB reserve lands (IR 1C, 2, 3) connecting with Duck Lake Road in Wynndel. (see map, Page 12). The trail would be located on the east side of the Kootenay River.

The trail would pass by IR 2 where LKB is proposing a future RV Park and Campground. The trail would compliment the RV Park and provide a tourist attraction which could attract visitors to the park.

The trails would be non-intrusive and would be located on the top of the dike. A wooden rail fence would separate the trail from the remainder of the property. The trail would be for walking and cycling only. Benches, garbage cans and signage would be placed along the trail.

The trail would be constructed and maintained through “grants”. It would be our hope that LKB would gain employment in the construction and maintenance of the trail.

Insurance coverage would be in place to protect the landowners where the trail crosses their property.



Valley Wide Trail Project and Proposed RV/Campground

Community/Worker Camp

The Lower Kootenay Band has formed a partnership with Shukin Orchards Ltd to establish a 200 acre cherry orchard on IR #5 in Wynndel.

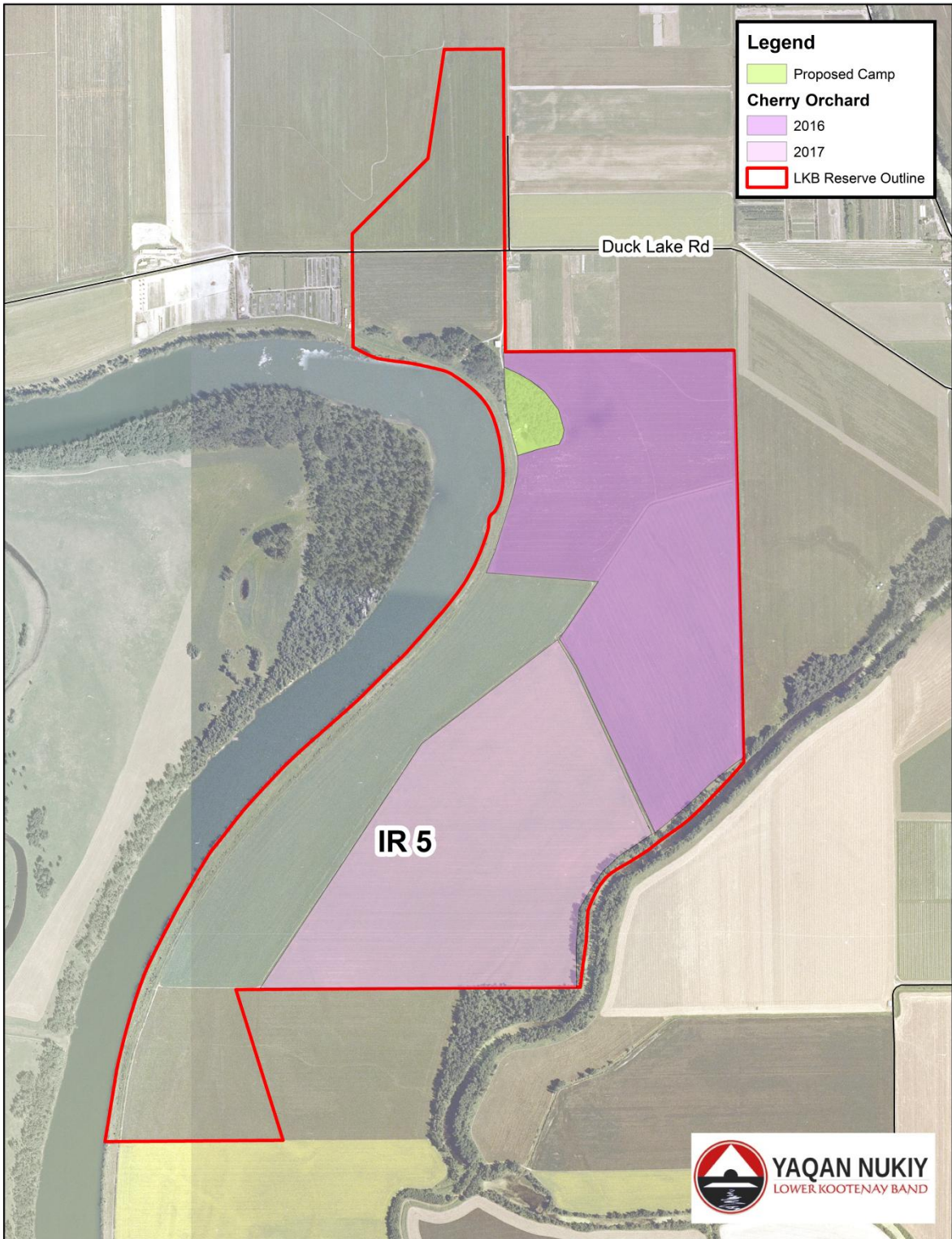
As part of the cherry orchard operations we need to accommodate non-resident those who would work in the orchards for approximately 6 weeks per year.

We are seeking community input through the Land Use Plan into establishing a campground on IR #5 which would accommodate cherry pickers during the season and be available for use by LKB members at all other times (see map, Page 14).

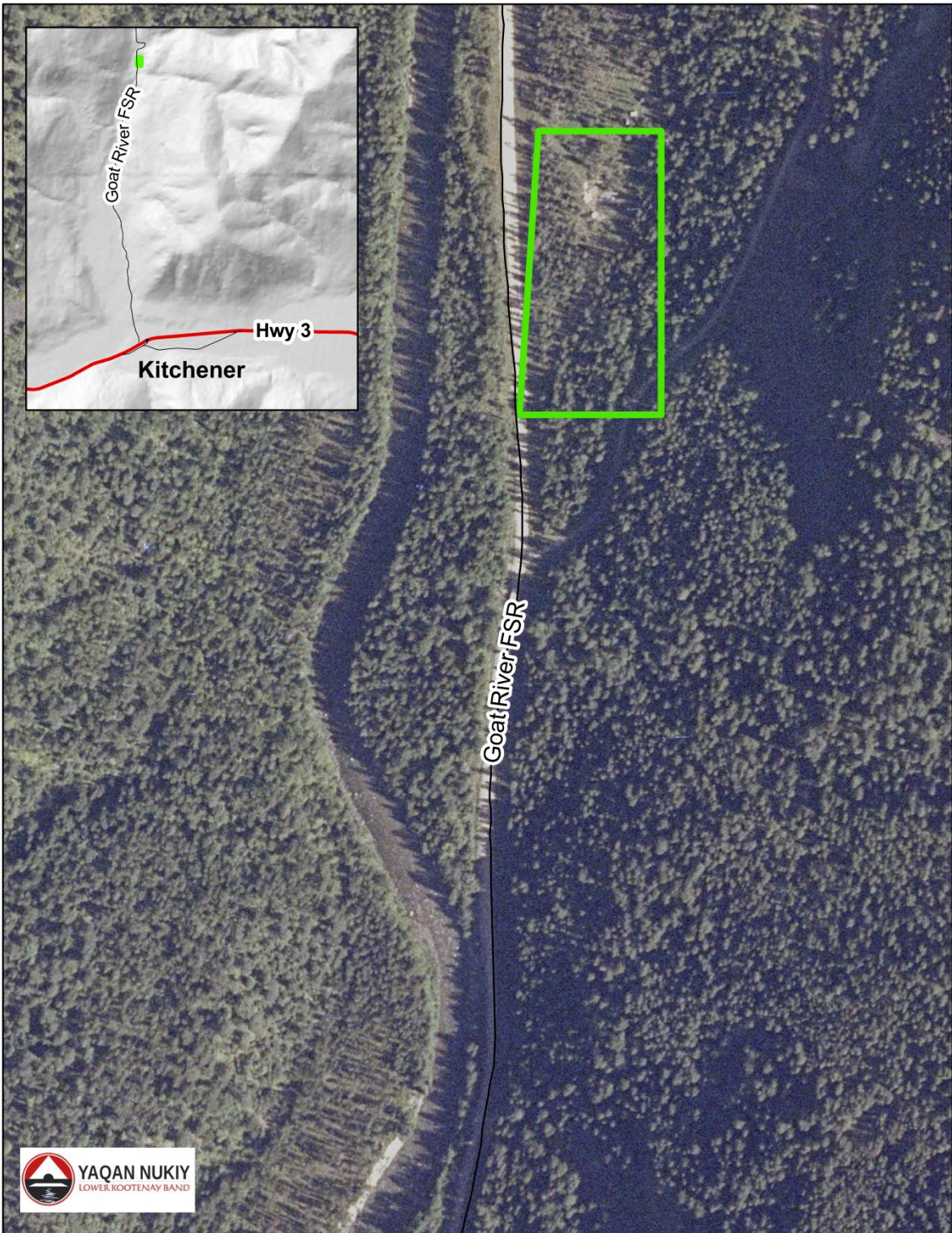
The partnership would develop the necessary infrastructure such as campsites, washrooms, showers and covered outdoor kitchen.

We would charge the pickers a fee for use of the campground. The campground would have security and would only be for workers of the Partnership.

The campground will create seasonal jobs for LKB citizens in security and maintenance.



Cherry Orchard



Kainuko Lodge