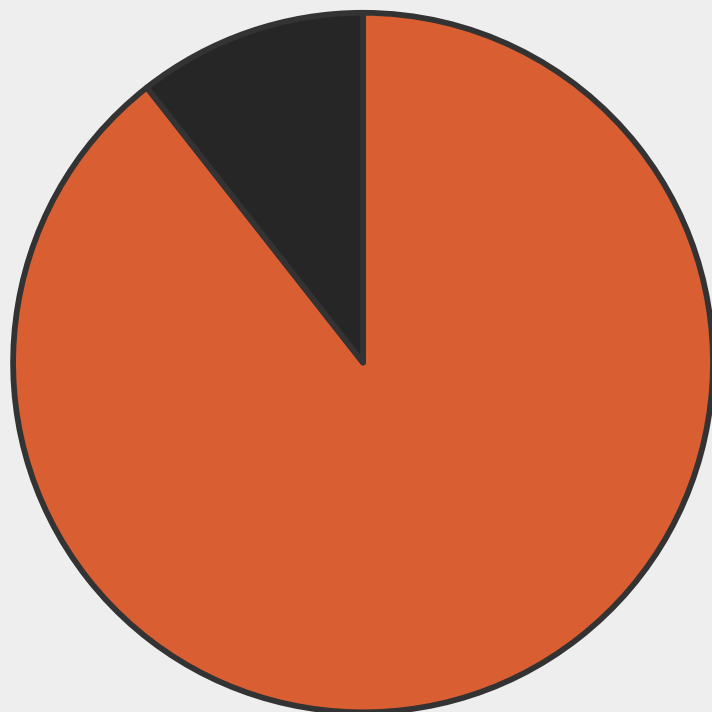


Lower Kootenay Band Land Use Survey Results

February 15, 2017



Are you a member or non-member?

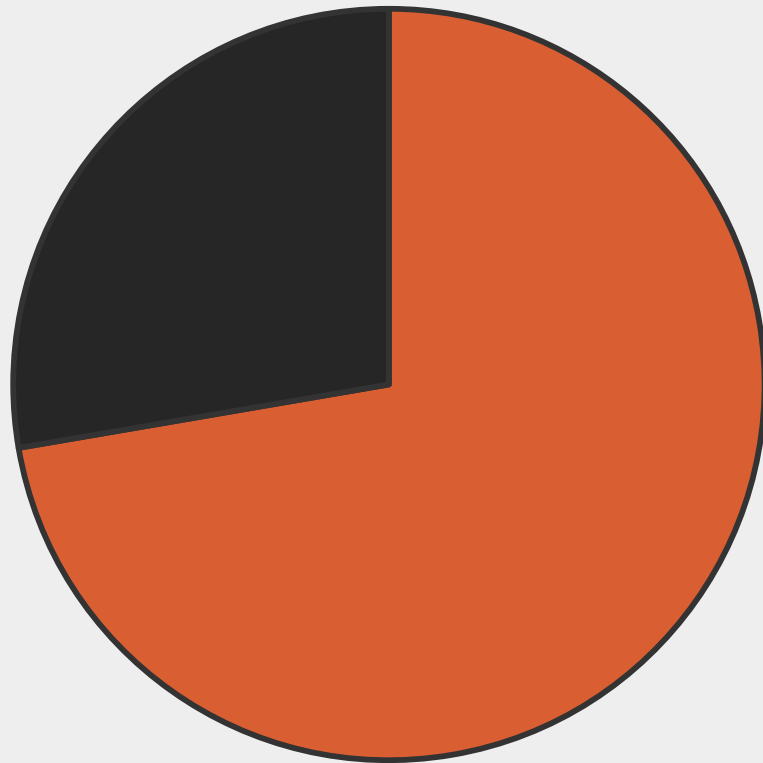


■ Member 89.4%

■ Non-member 10.6%



Do you live:

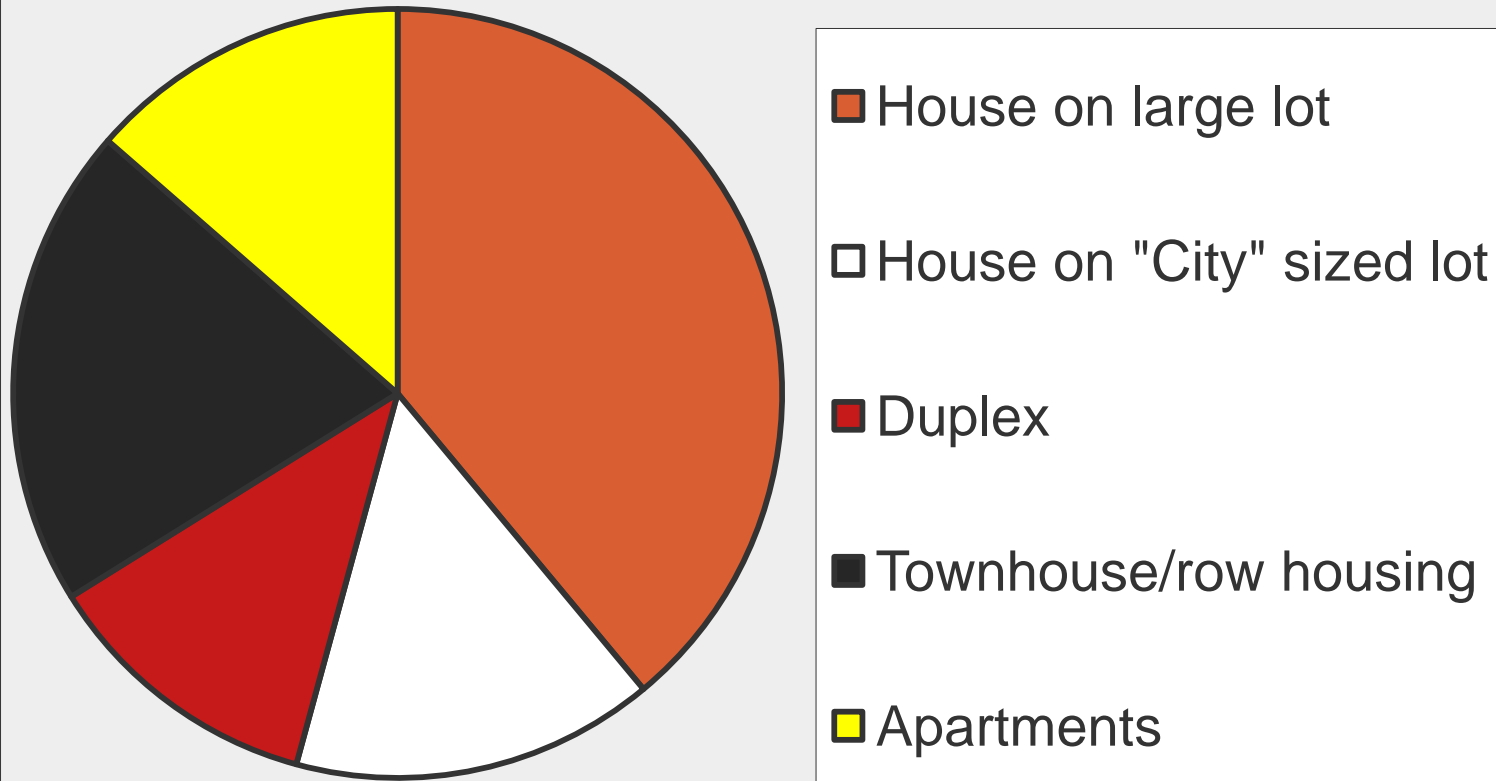


■ On-Reserve 72.3%

■ Off-Reserve 27.7%



What type of housing does our community need?



Would you like to explore other housing opportunities? (eg. in house suites, different housing layouts, backyard suites)



29 People Replied Yes
14 People Replied No
2 People Replied I don't know
Condominiums
Housing in town
Different housing layouts to support a growing family
Expanding new sub divisions
Suites, in house or backyard
Multiplexes
Mini homes
Single person/parent housing



Do you have any additional comments or ideas about housing?

16 people replied no

Build quality houses..

Smaller residential units for single people or small families would be a good idea.

Make it more affordable for members

I think apartment would be a good idea

Create Homes for members to come back to

Smaller energy saving homes smaller lots and Veggie Gardens.

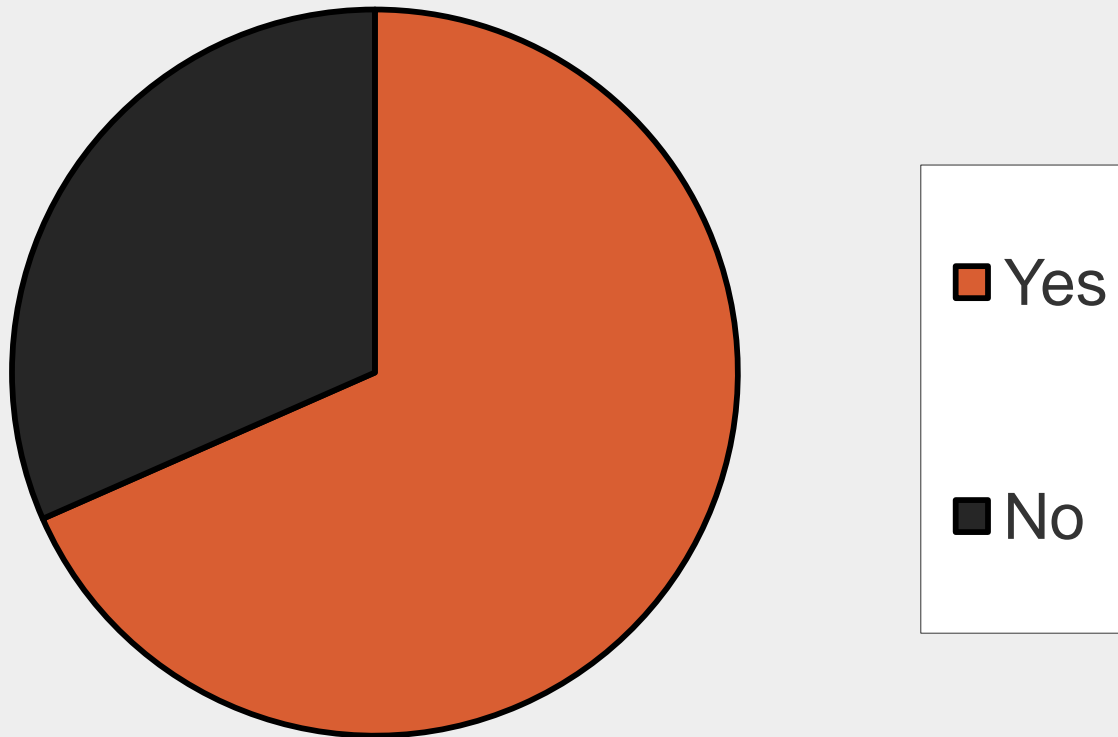
Other options to CMHC mortgages. Co-Op. easier access to rent to borrow tools to maintain properties. Seminars to teach housing maintenance for people who need or want to. Smoother transitions between housing directors (LKB)

Learn home repair

Funding for upkeep and repairs



Should we encourage retail and commercial development on-reserve?





If 'yes' where would you like to see industrial development?

Points 1 & 3
Easy access
Yes
IR 1, IR 1B, IR 1C
Close to main rds
Depending on the location and what kind of development
Depends on the development
Hwy 21



along the highway 21 (old village)

Farm

Old village site, and what was known as Osprey
Development area

Over in the area zoned commercial

Anywhere applicable



What types of businesses does our community need?

Small scale retail (e.g. corner store)	72.7%
Large scale retail (e.g. department store)	23.6%
Professional Offices (e.g. dentist)	36.4%
Entertainment	30.9%
Warehousing	30.9%
Manufacturing	27.3%
Industrial or Natural Resource Development (timber, gravel)	49.1%
Home-based Business	34.5%
Campground/RV Park	56.4%
Beach/Marina	30.9%
Other (please specify)	8.0%



What types of businesses does our community need?

Comments:

- Hotel
- I thought we already had business's in our band name.
- Get us doing more for us
- Cannabis fields
- Gas Bar
- Smoke shop

Do you have any concerns about certain types of businesses on reserve?



26 people replied no

16 People replied Yes

Alcohol sales

With increased traffic in reserve areas, who will pay & maintain roads, utilities, insurance, Garbage removal, vandalism , etc...

Make them people friendly, and develop skills to improve life

Nothing that will be harmful for people or the land

We need more of us doing more for us

Where does the money go, how is it spent

I like having an economy

Keep businesses simple as we can.



Logging, development impeding on natural resources

Anything that would drastically and negatively impact the community and the natural landscape on the reserve is my only concern

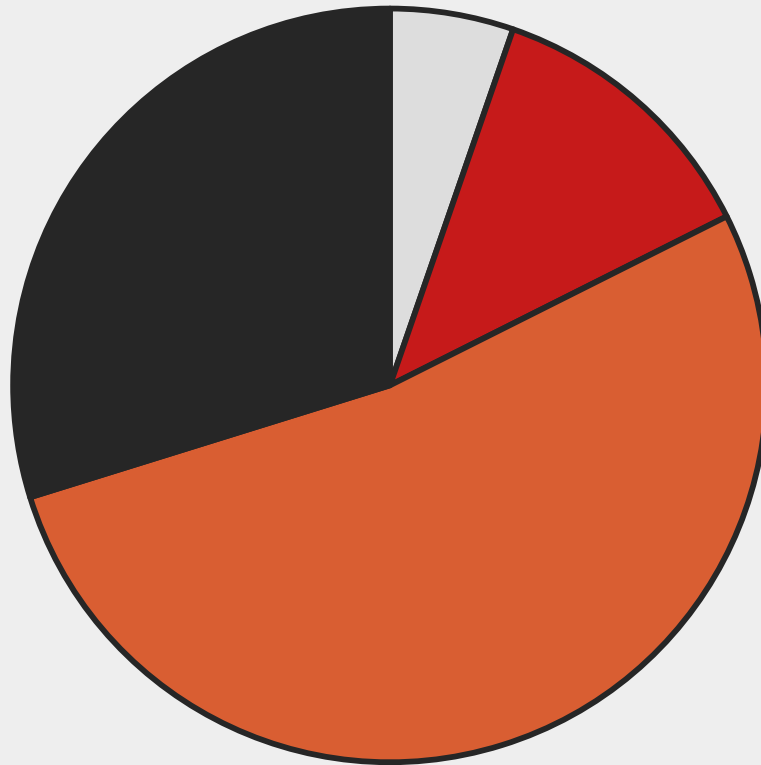
Not anything that is illegal (obviously) or doesn't help the community as a whole.

Where is the benefits for community members IE revenue sharing

Long term damages to property. Maintenance and supervision of properties. Knowledge of property rights and maps, we the community are unaware.



Would you like to see more industrial development in Lower Kootenay?



☐ Yes

☐ No

☐ Don't Know

☐ If yes what types of industrial development are suitable?

Would you like to see more industrial development in Lower Kootenay?



If yes, what types of industrial Development are suitable?

- Explore all options
- Logging
- Sustainable farming/energy
- Gravel pits
- Not sure
- Corner store
- Agricultural and/or energy
- Us working to make it our own
- No

Would you like to see more industrial development in Lower Kootenay?



If yes what types of industrial Development are suitable?

- Housing and prefab housing projects Milling lumber Tech jobs?
- Training
- Perhaps “short logging”
- Timber is a good one
- Clean energy manufacturing products
- Food processing plant
- Any kind

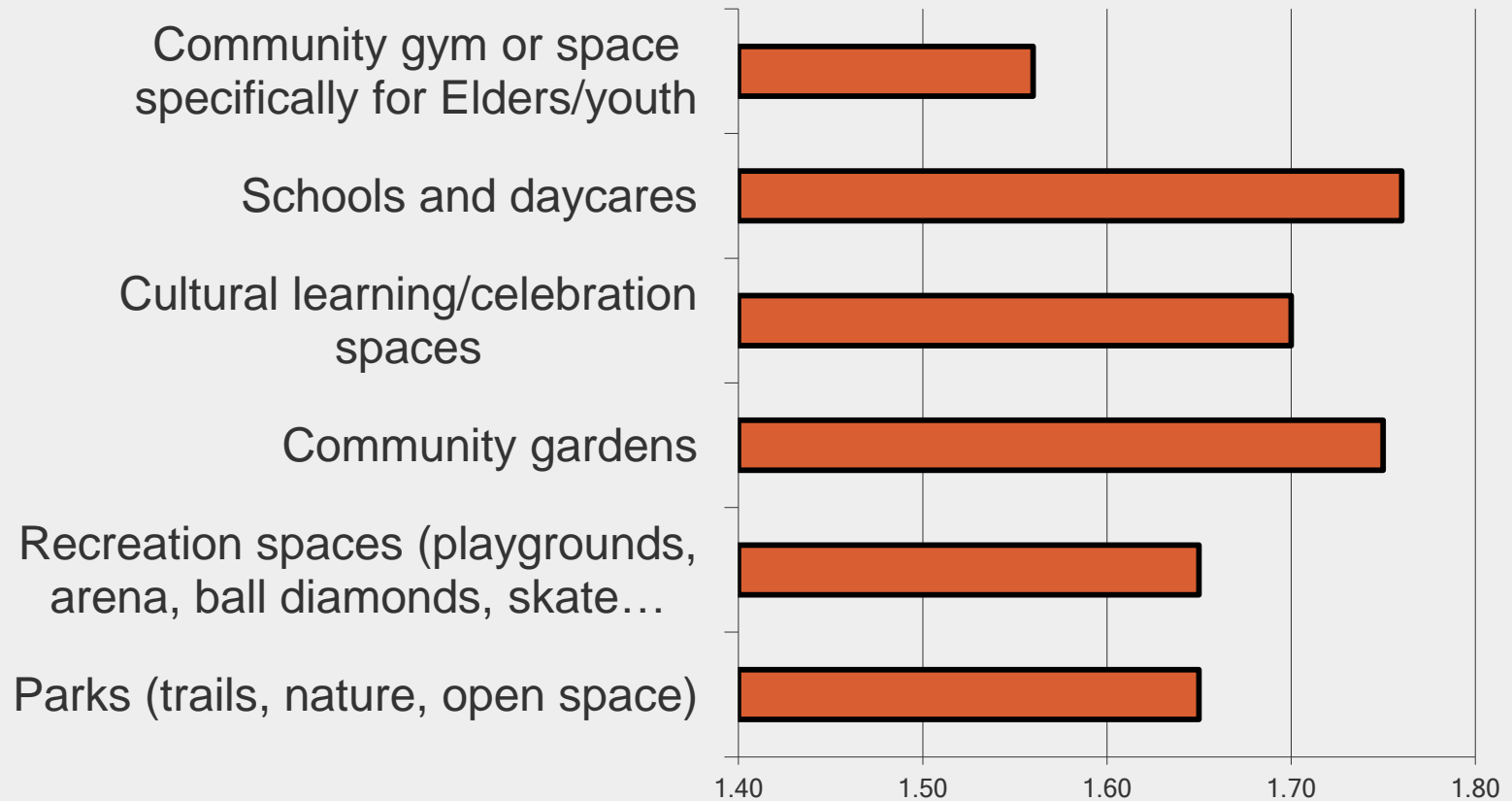


I feel the amount of space we have for:

Answer Options	Not Enough	Just Right	Too Much
Parks (trails, nature, open space)	22	33	2
Recreation spaces (playgrounds, arena, ball diamonds, skate parks, gym)	21	31	2
Community gardens	16	38	2
Cultural learning/celebration spaces	17	36	1
Schools and daycares	13	41	0
Community gym or space specifically for Elders/youth	24	30	0



I feel the amount of space we have for:





What should we do with our church?

Answer Options	Response Percent
Restore	35.1%
Remove	33.3%
Move to different location	3.5%
Other (please specify)	28.1%



What should we do with our church?

Other (please specify):

- Restaurant
- To memorialize the area with parts of the church and make it a community gather
- Memorial site
- A history board of the church and have the bell there to
- Put up a memorial with the bell if it is ever found.
IR1
- I'm not sure
- Remove but keep historic pieces for remembrance



What should we do with our church?

- Remove but replace monument
- Restore, but not taking all financial responsibility.
Turn into tourist attraction
- Why is this even a question and open for topic.
Restore it, it's a part of our history and too much of our traditional buildings are being taken from us.
- Restore and move
- Leave it how it is, it's not bothering anyone at the moment.
- Save part as momentum
- Restore and turn it into a museum/artisan store for community members
- Leave it alone and find the bell



Where should new community spaces (such as church, health centre, ball fields, pow wow arbor) be located?

points 1 & 3
1r1c
No church. Place health building in that area.
IR 1
On IR1 along Hwy 21 where church/ old band hall was located.
IR 1
Maybe to IR 1C
IR1A
Close to roads
Easy accessible place - keeping in mind {the elderly, disabled, and people without vehicles}



D1

Where the buildings are now, seem fine.

Leave as is

Somewhere near Point 3 I suppose

I think a pow-wow space specifically would be good on the flats either along Kootenay River or elsewhere

Depends on space available

I would like to see the lands down below utilize for this

Where they are

For health centre, at the old village site, pow wow harbour and ball field, at the land where osprey development was identified to be.

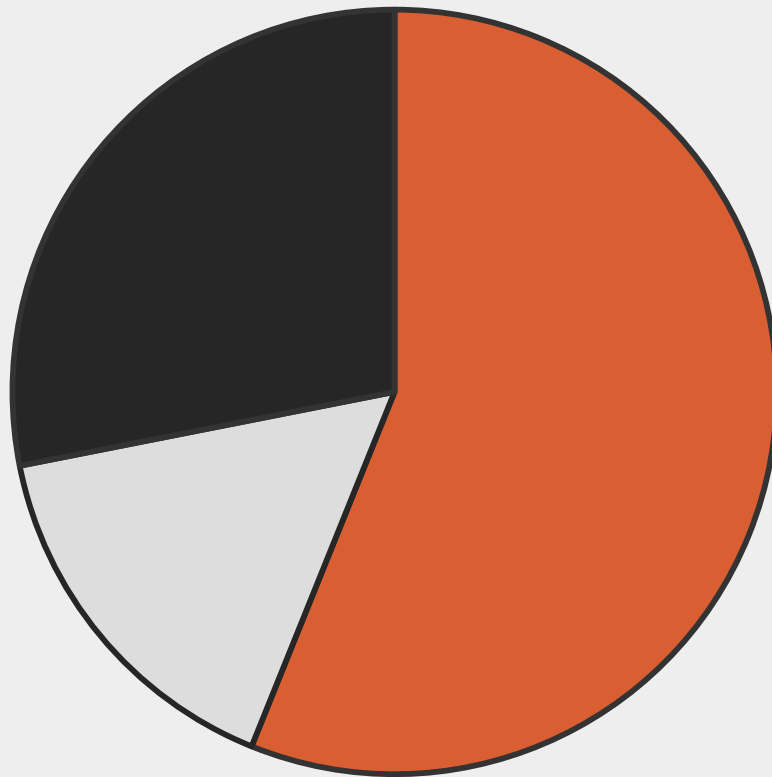


Would you be interested in participating in a group session, or offering cultural or traditional language context to the Plan?

YES: 34	NO: 10	DEPENDS/ MAYBE: 5	N/A: 1
--------------------------	-------------------------	--	-------------------------



Do you think we need a campground on IR5 for community and worker use?



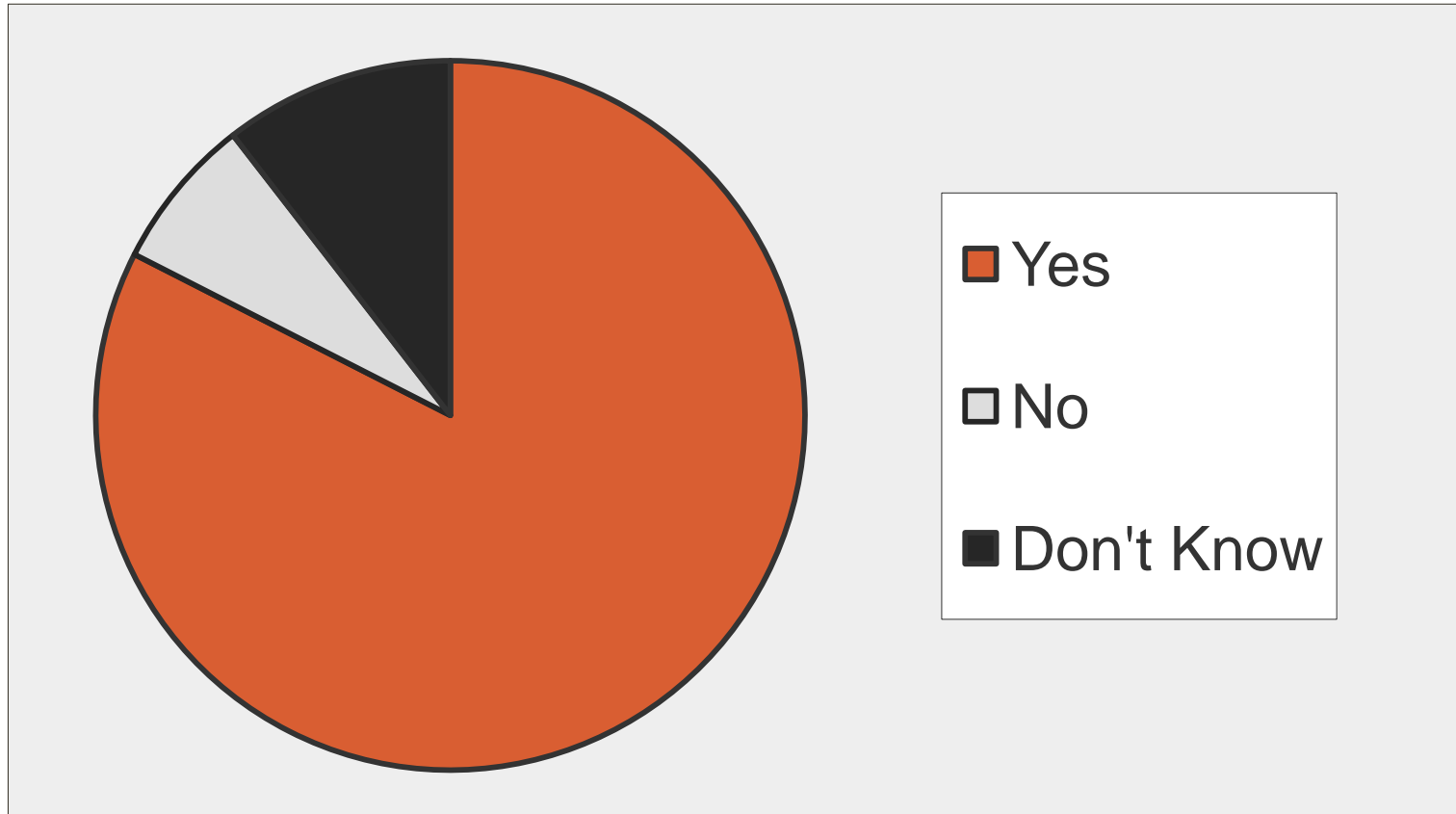
■ Yes

□ No

■ Don't Know

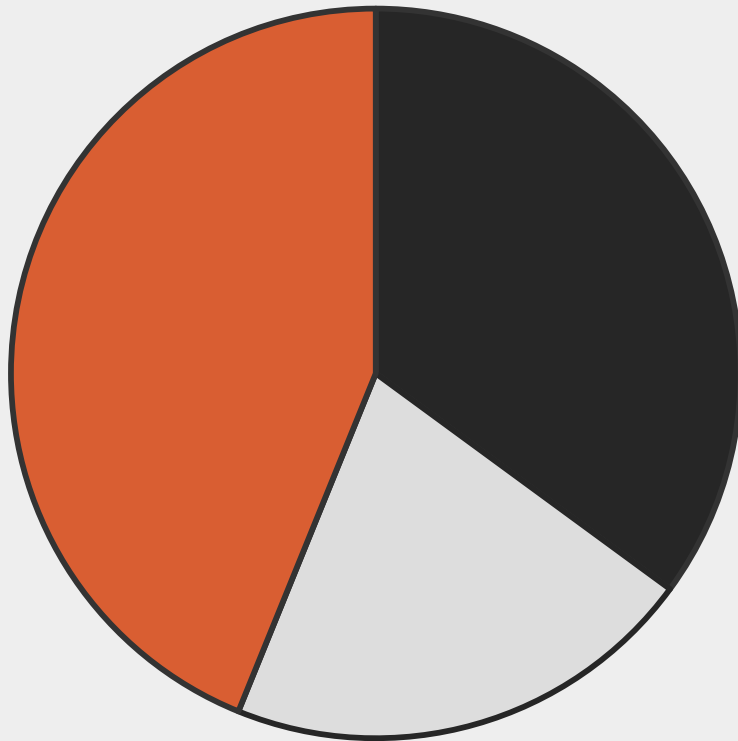


Do you support selective logging to reduce the risk of wildfire within the community?





Do you support Cenotaph park on Simon Road to be used for institutional purpose?



■ Yes

□ No

■ Don't Know

Do you have any additional comments or ideas on Community Spaces?



20 people replied no

I think that as much as possible, we need to keep residential areas separate from commercial areas

Develop a golf course on IR 1

Resource and institutional facility's for the community

Simon Road area I am in support of a group home

Yes, in order for additional community spaces, it is important to know that the land is suitable and equipped for future use. For example, Cenotaph Park is close to the septic field.

Needs more play areas for band



Question 22 response: IR 5 doesn't seem readily accessible to the public. Too far out of the way.



Should the general public be granted access to LKB lands/community spaces, signage reflecting that the lands in question are in Ktunaxa territory/on LKB land would be informative and an acknowledgement to our people.

Leave the Korean War monument at Cenotaph Park

As long as we try to teach kids as their growing up about not damaging the current and future spaces.



Are there any land uses, amenities, or services you would like to see on any of LKB's lands?

25 people replied no
1 person said yes
Educate and improve community recycling.
IR1,IR5
A community gym would be nice
Golf course and kayak rental facility
Fishing hatchery
I really think that our pow wow has grown out of the gymnasium and an outdoor or pow wow building would be great!
Community store-IR 1, Green energy-IR 2
A youth mental and health facility - just for the youth



Corner stores or like a gas station and a store where we could sell things we make

Water parks

I think researching the possibility of setting up solar or wind plants for the purposes of creating sustainable energy for ourselves and the purposes of selling is a good idea.

I would like to see a culture camp along the river edge would be nice to see.

Golf course

I am more concerned on how this will affect all members



More of the wet lands used for community gardening

I think business type (Stores, gas. Station, pow wow arbour, maybe ball field could all do well on IR2. Its right on the highway and more people may utilize it in that location.

Which land uses do you think are most important to consider for development over the next 20 years?



Answer Options	Very Important	Neutral	Not Important	Don't Know
Single Family Housing – Small lot (i.e. 1/4 acre lots)	54%	41%	4%	2%
Single Family Housing – Large lot (i.e. lots larger than 1/4 acre)	56%	26%	14%	4%
Multiple Family Housing (i.e. duplexes, triplexes, fourplexes, apartments)	62%	28%	8%	2%
Commercial (i.e. grocery store, gas station, convenience store)	58%	31%	9%	2%
Community Facilities (i.e. rec. facilities, community hall, library, youth centre)	55%	35%	9%	2%
Parks and Open Space	31%	55%	15%	0%
Agriculture	53%	33%	7%	7%
Industrial	28%	43%	13%	15%
Forestry	41%	39%	6%	15%

Which land uses do you think are most important to consider for development over the next 20 years?



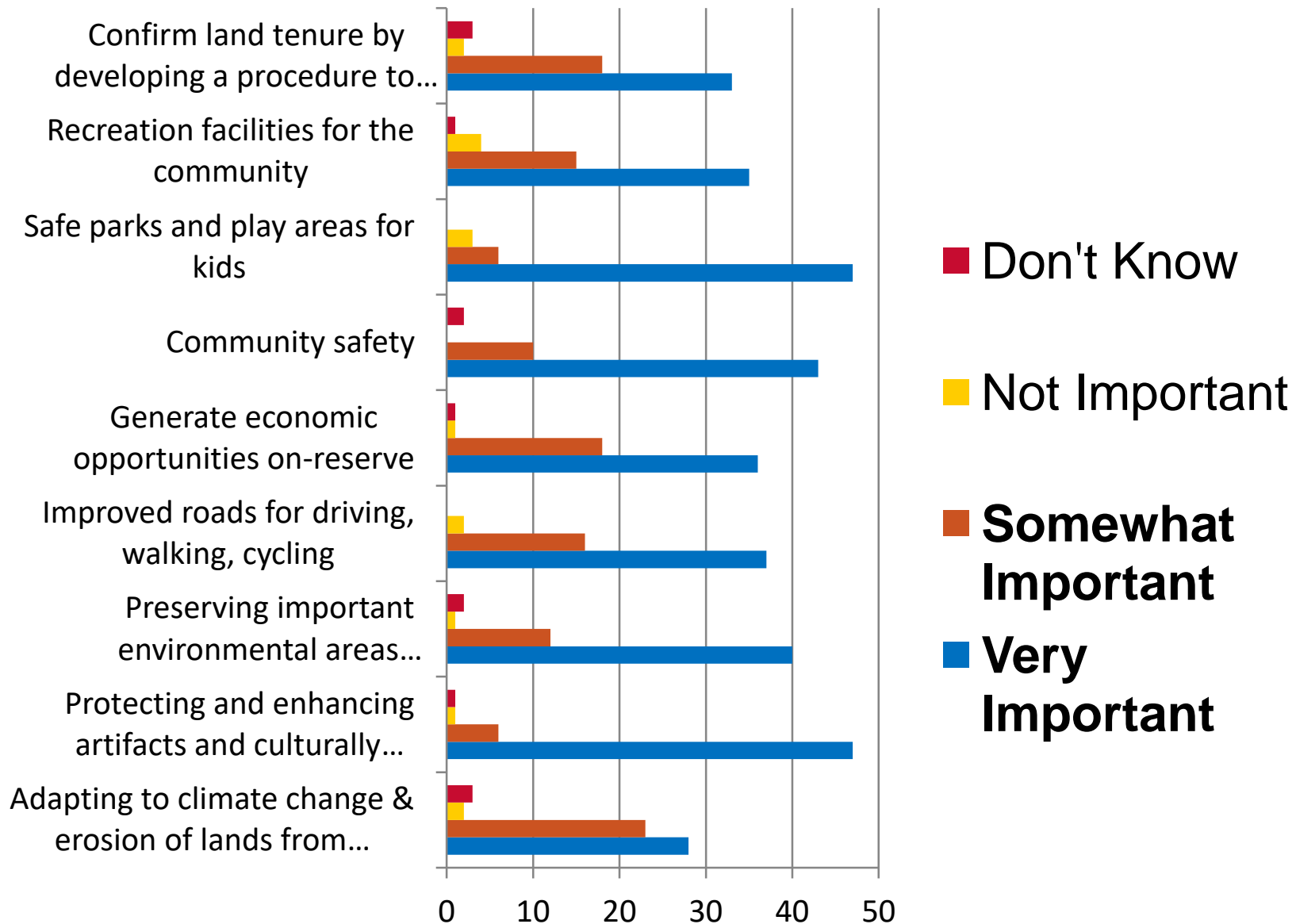
Other (please specify):

More for the youth and open for the youth, no discrimination towards them, also more for the elders.

Agriculture and forestry but only if we are doing it

Smoke shop

Please indicate how important the following are to you:



Please indicate how important the following are to you:



Answer Options	Very Important	Somewhat Important	Not Important	Don't Know
Adapting to climate change & erosion of lands from Kootenay and Goat Rivers	50%	41%	4%	5%
Protecting and enhancing artifacts and culturally sensitive areas	85%	11%	2%	2%
Preserving important environmental areas (streams, trees, steep slopes)	73%	22%	2%	4%
Improved roads for driving, walking, cycling	67%	29%	4%	0%
Generate economic opportunities on-reserve	64%	32%	2%	2%
Community safety	78%	18%	0%	4%
Safe parks and play areas for kids	84%	11%	5%	0%

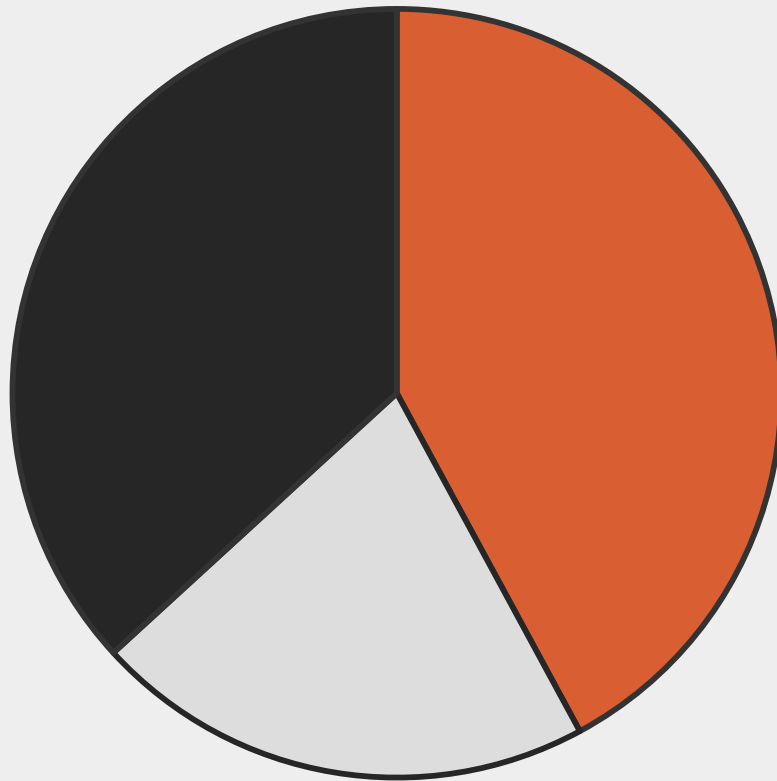
Please indicate how important the following are to you:



Answer Options	Very Important	Somewhat Important	Not Important	Don't Know
Recreation facilities for the community	64%	27%	7%	2%
Confirm land tenure by developing a procedure to establish past and present Certificates of Possession and traditional ownership	59%	32%	4%	5%



Do we want to participate with the Town of Creston and Regional District of Central Kootenay in the Valley Wide Trails Project and allow public walking/hiking/biking along the dikes north of the goat river?



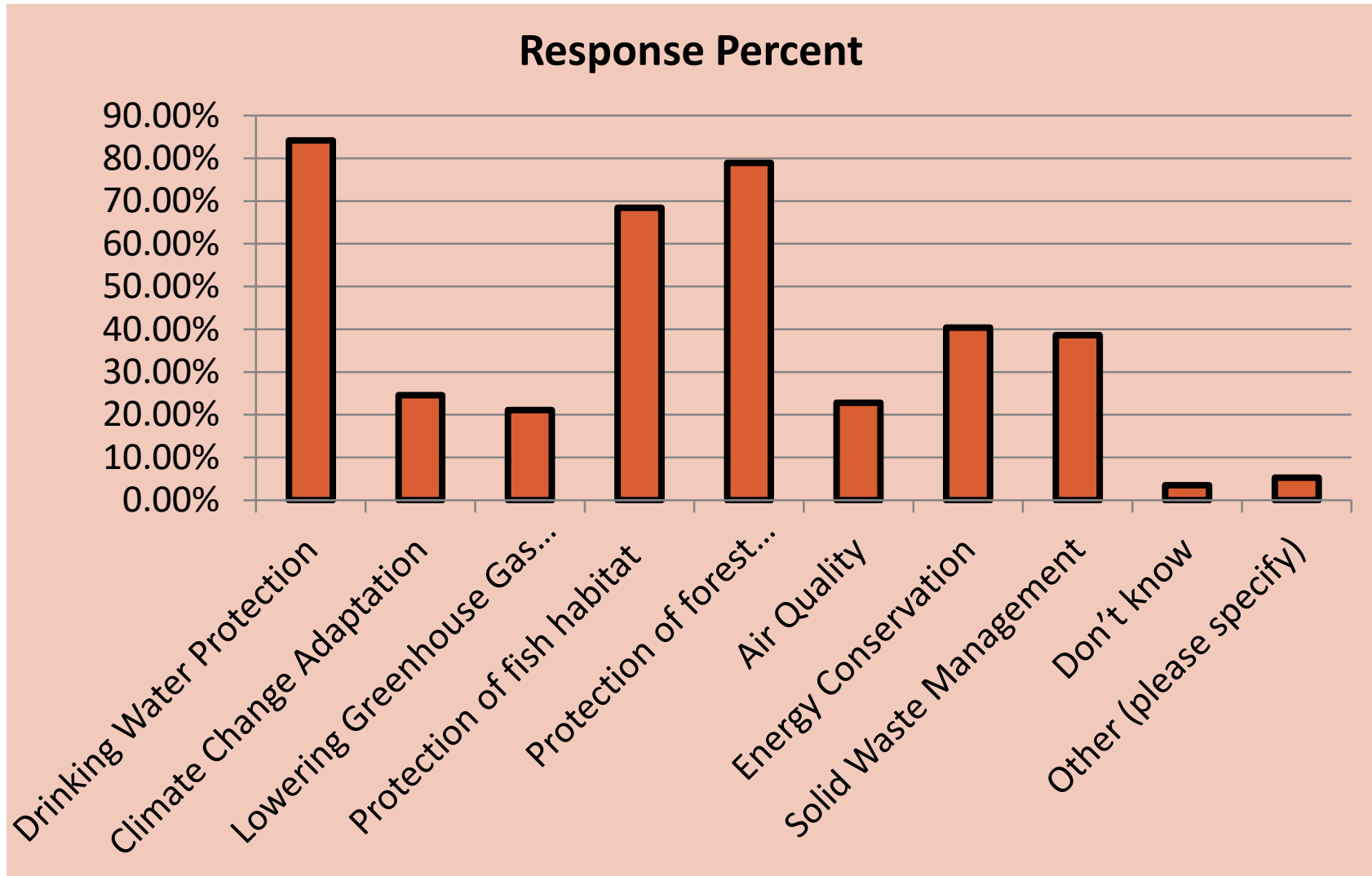
■ Yes

■ No

■ Not sure



What environmental issues do you feel are most important in Lower Kootenay?





What environmental issues do you feel are most important in Lower Kootenay?

- Drinking Water Protection **84%**
- Protection of forest ecosystems and wildlife. **79%**
- Protection of fish habitat (i.e. rivers, streams, ponds, wetlands, etc.) **68%**
- Energy Conservation **40%**
- Solid Waste Management **39%**
- Climate Change Adaptation **25%**
- Air Quality **23%**
- Lowering Greenhouse Gas Emissions **21%**
- Don't know **4%**
- Other (please specify) **5%**



What environmental issues do you feel are most important in Lower Kootenay?

Comments:

- All of the above
- Not enough information about how the community deals with these issues

Please describe any natural places in or around Lower Kootenay that you think need protection (for example hunting, gathering, ceremonies, etc.):



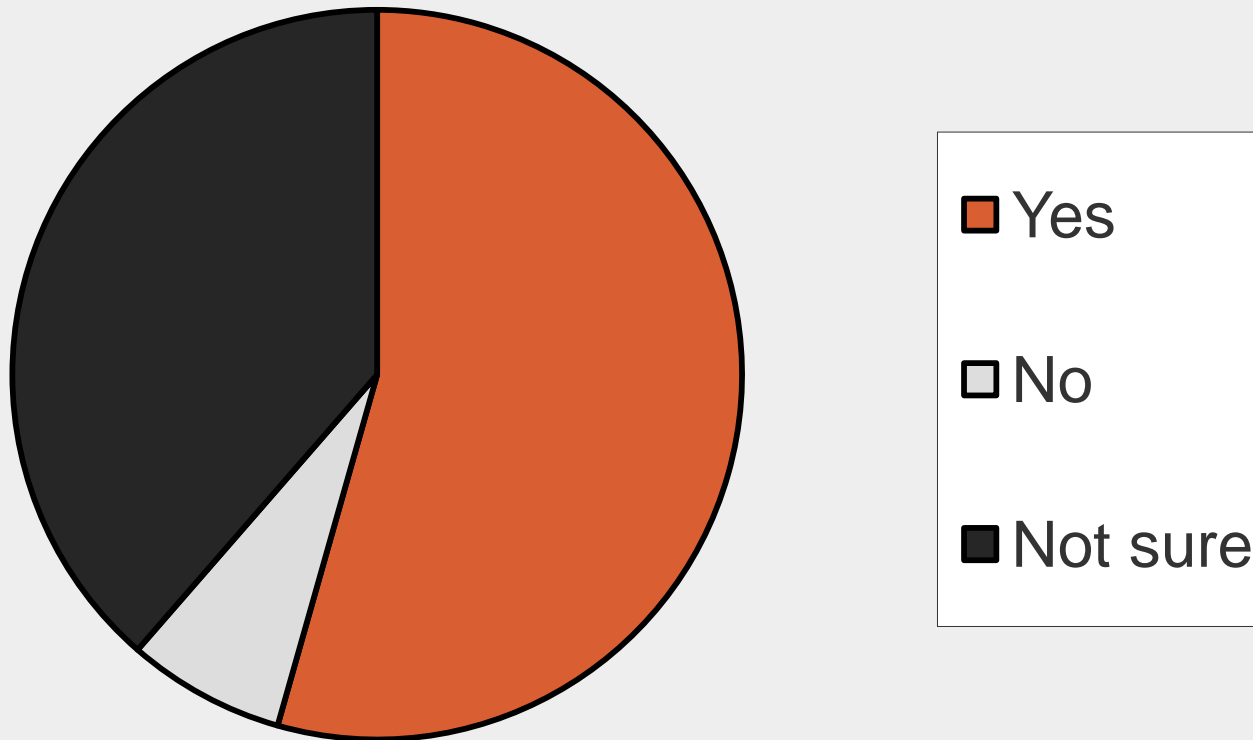
IR1, 1A - 1B
13 people replied no/unsure
Yaqan Nukiy
Wetlands
Pictographs on Kootenay Lake
IR 1B, IR 1 and IR 1 A
Ceremonies
Hunting
All the above
Roundhouse, wetlands
All places of spiritual significance Ceremonial

Is there special land management techniques/ requirements relative to your traditional activity/natural place that needs to occur (for example controlled burn, clear roads, etc.) and where?



21 people replied no/unsure
River bank erosion.
Yes IR 1C preservation
Security and private owners control.
Seems to be okay.
IR1C
Fencing and security
Controlled burning for all along the roads
Clear roads and controlled
Clear roads, keep garbage off all lands, keep an eye on invasive plants,

Do you support gravel extraction on reserve lands for use in community infrastructure projects?



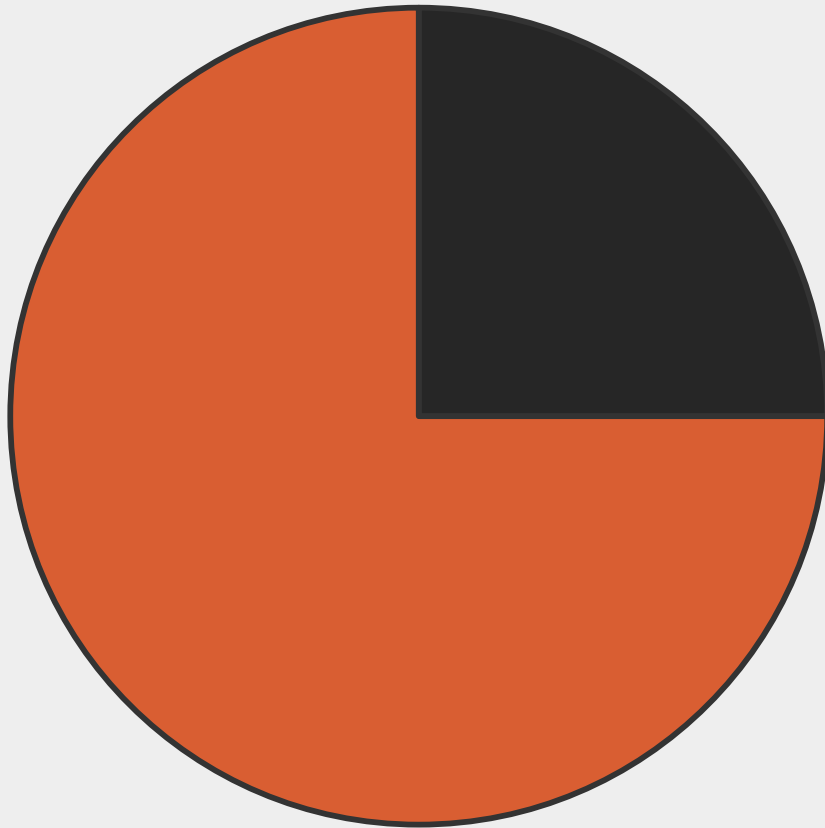


What are three things Council could do to encourage you to participate in community meetings more often?

- “Topics - results i.e. survey results”
- "Community pride, Respect our leaders A little less talk and a lot more action"
- Keep offering good food



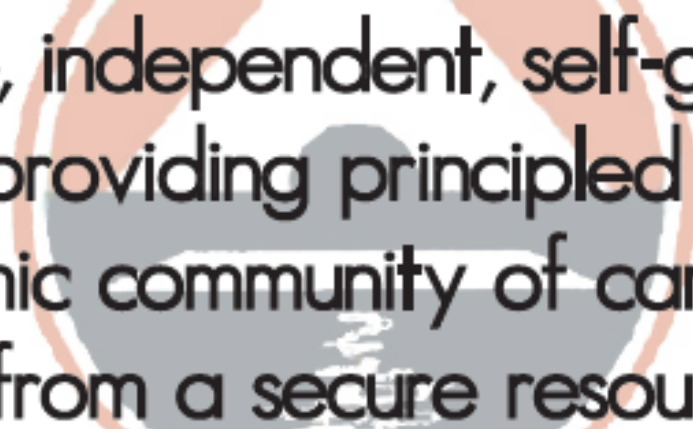
Would you like to arrange to provide further comments?



■ Yes ■ No



Lower Kootenay Band

A large, faded version of the Lower Kootenay Band logo is centered in the background of the text.

A stable, independent, self-governing authority providing principled leadership to a dynamic community of caring, healthy citizens, from a secure resource base.

Thank You!

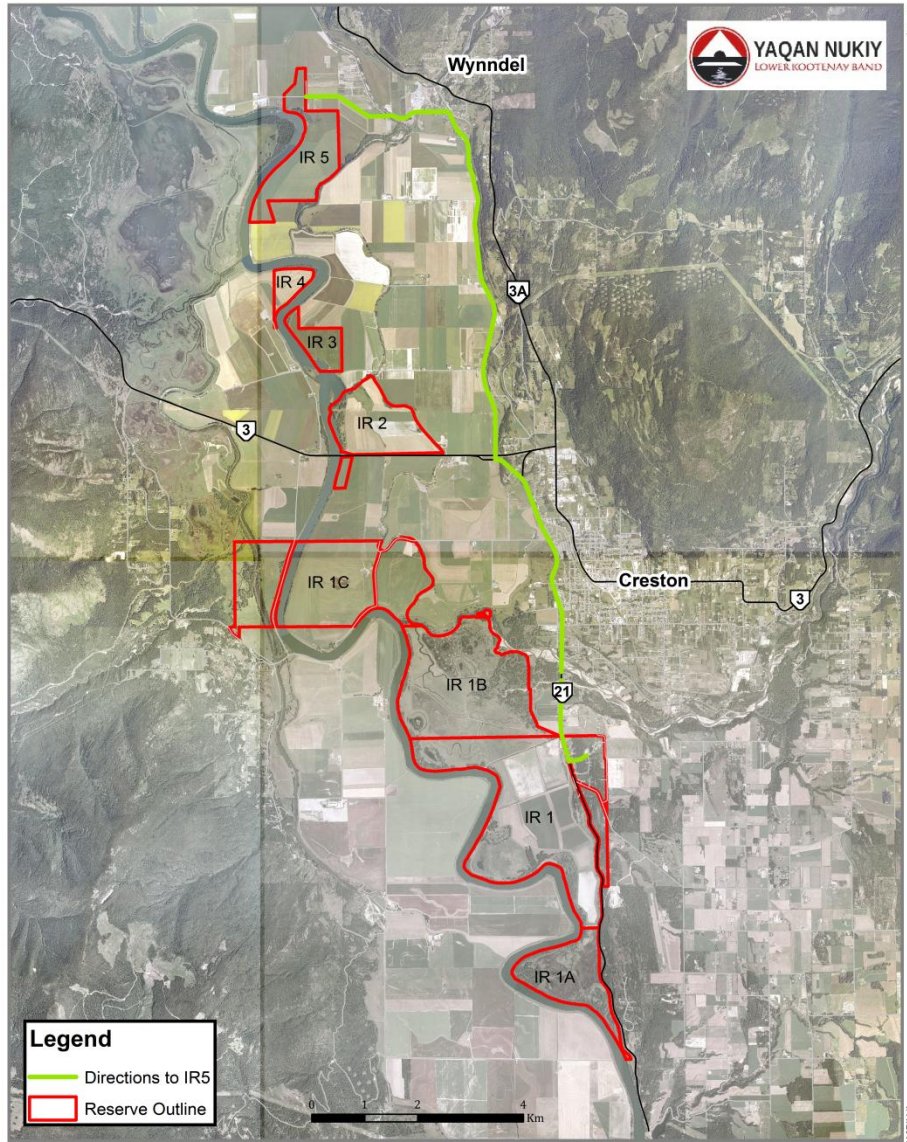


Further Comments or Questions Contact

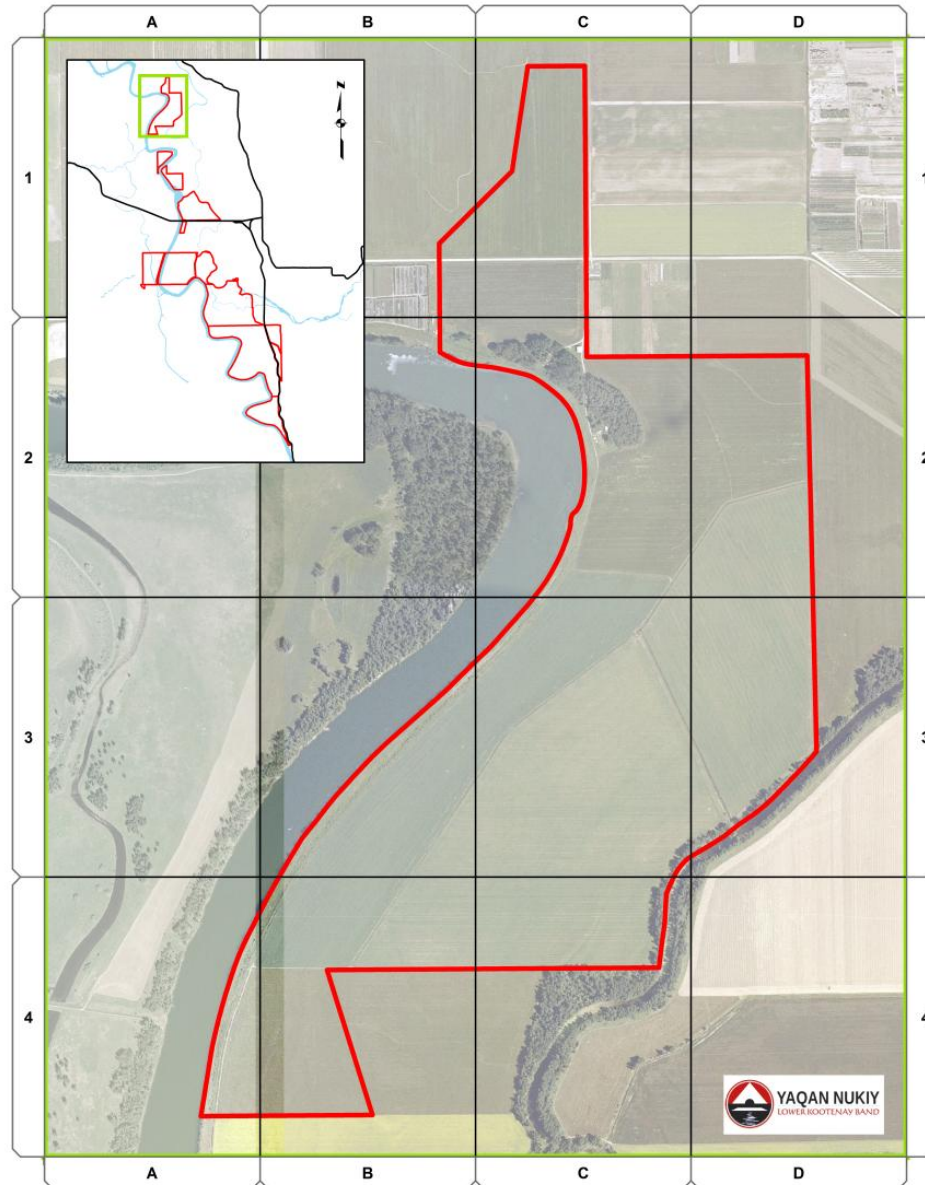
Norm Allard

250-428-4428 ext. 227

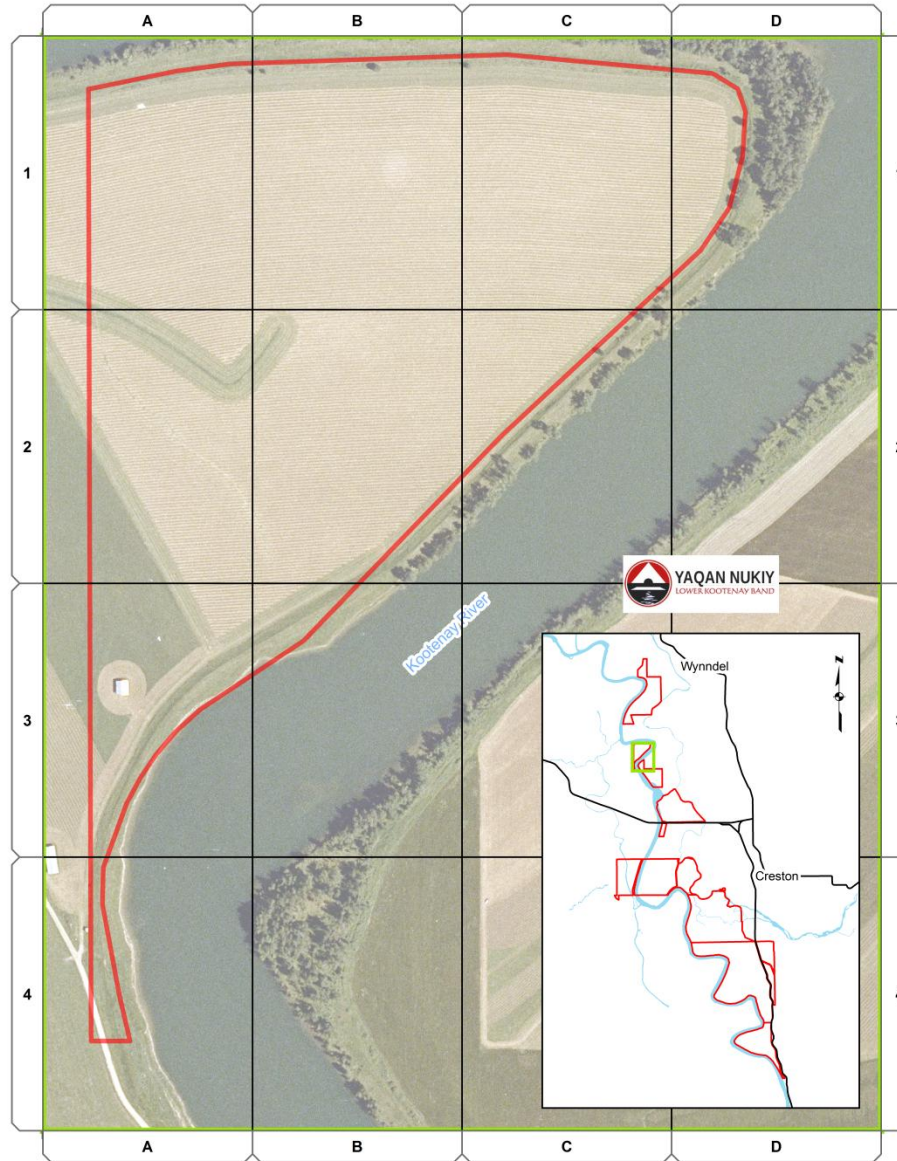
norm@lowerkootenay.com



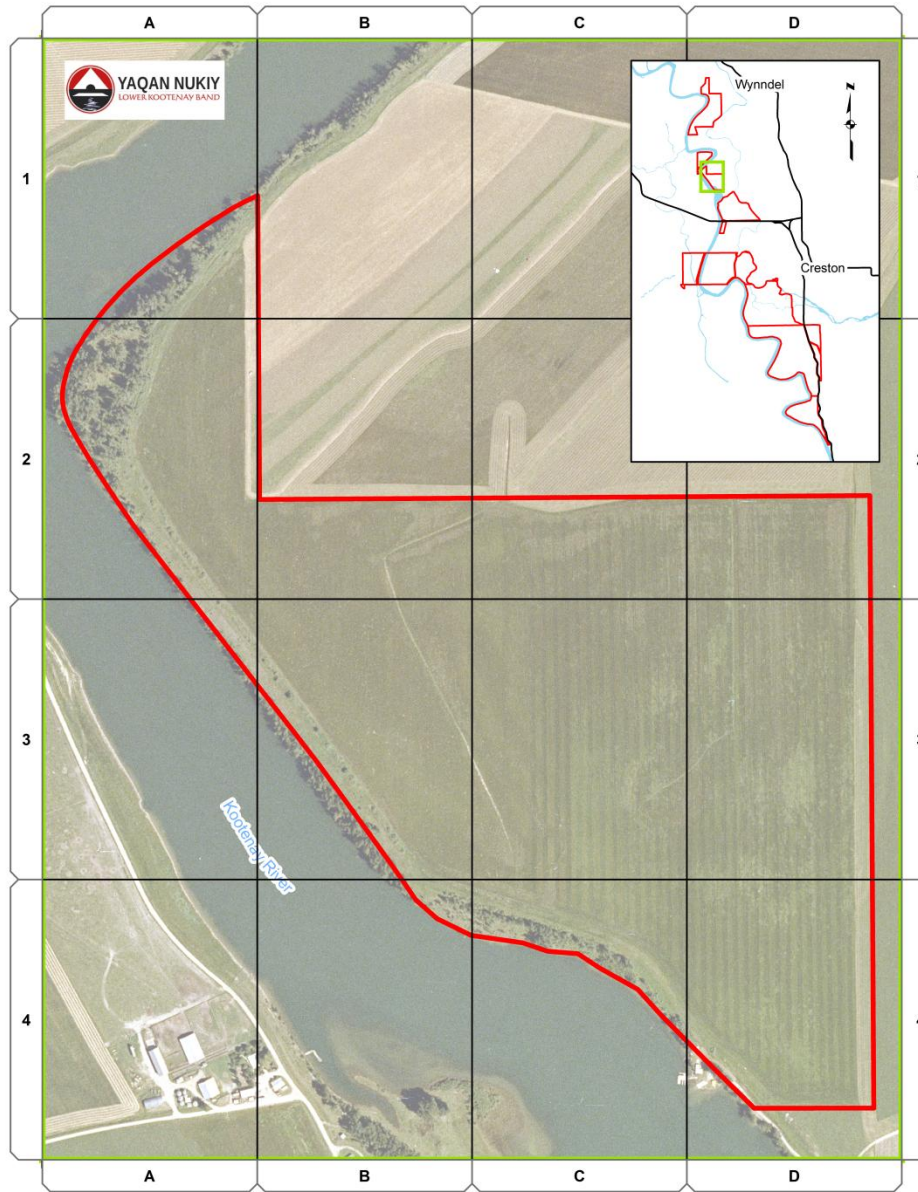
Directions to IR5



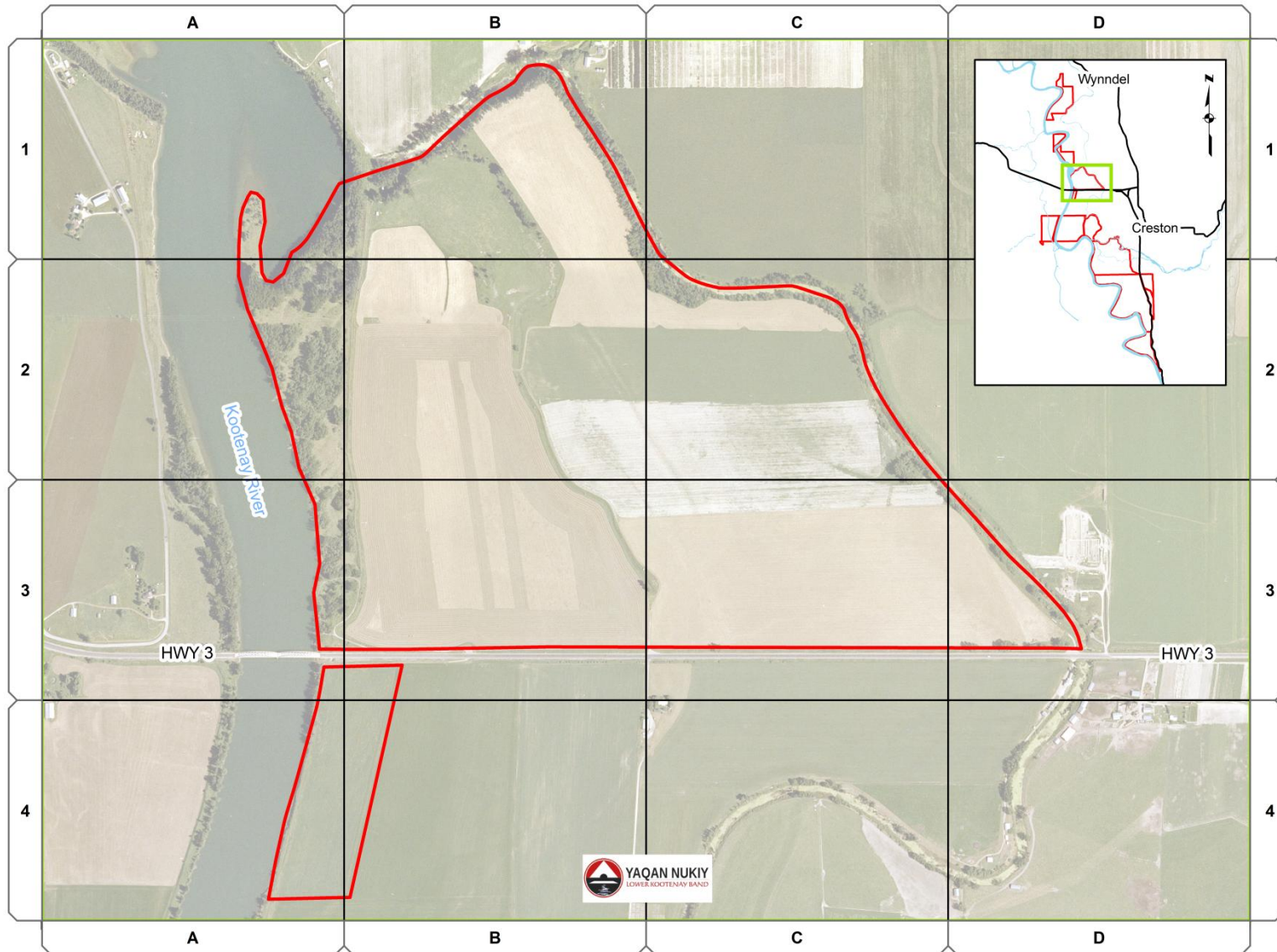
Lower Kootenay Band IR5



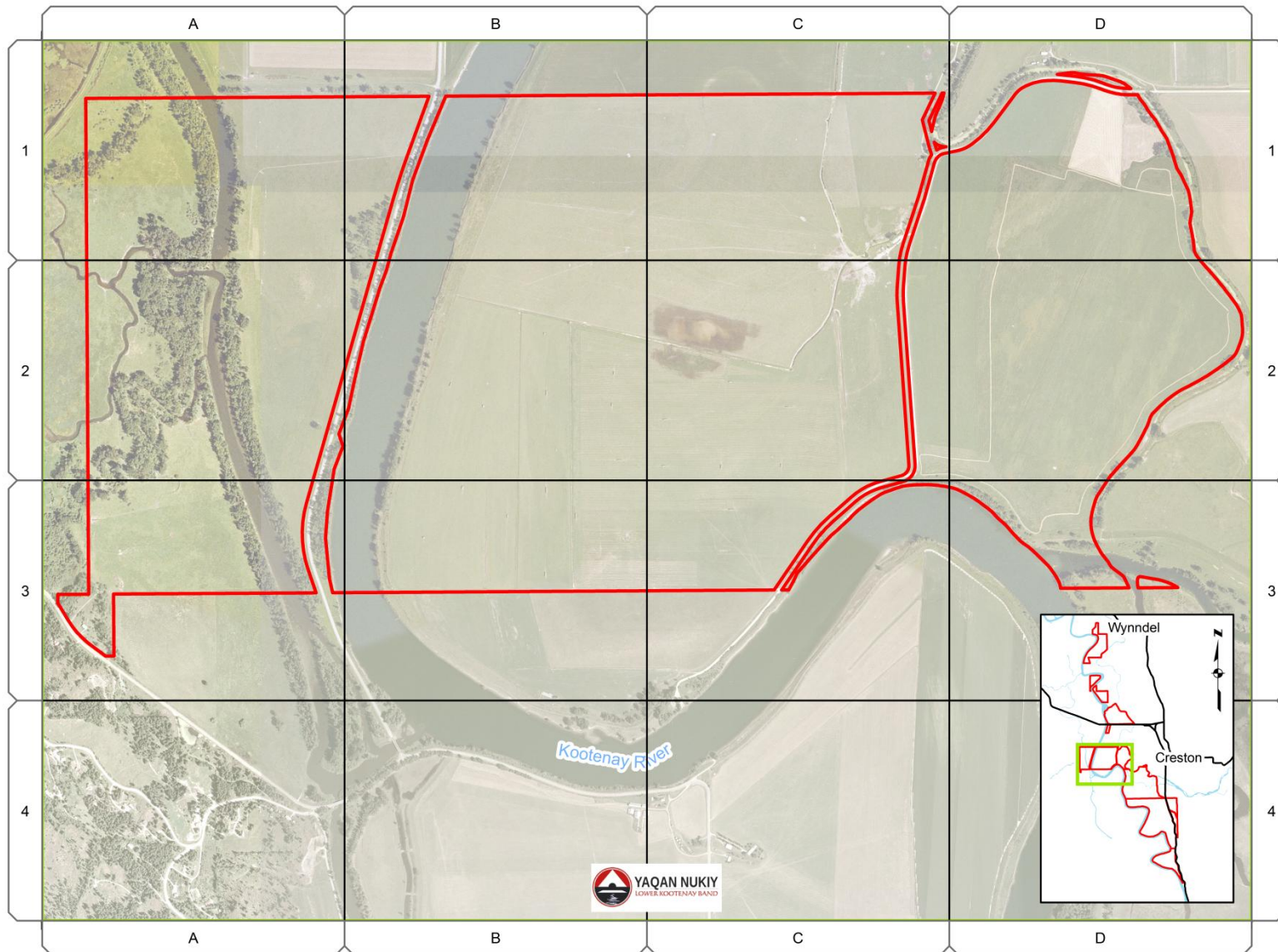
Lower Kootenay Band IR 4



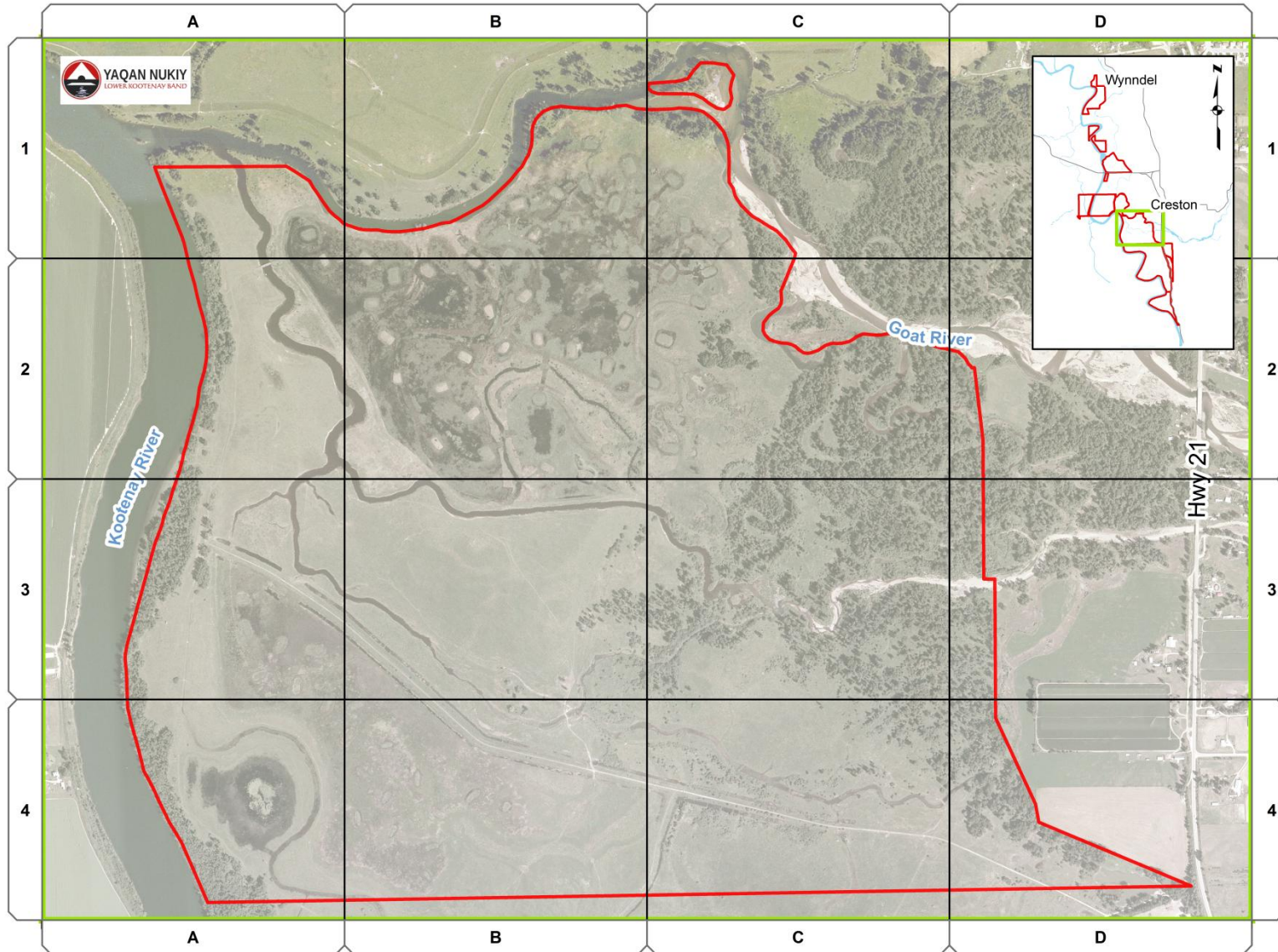
Lower Kootenay Band IR3



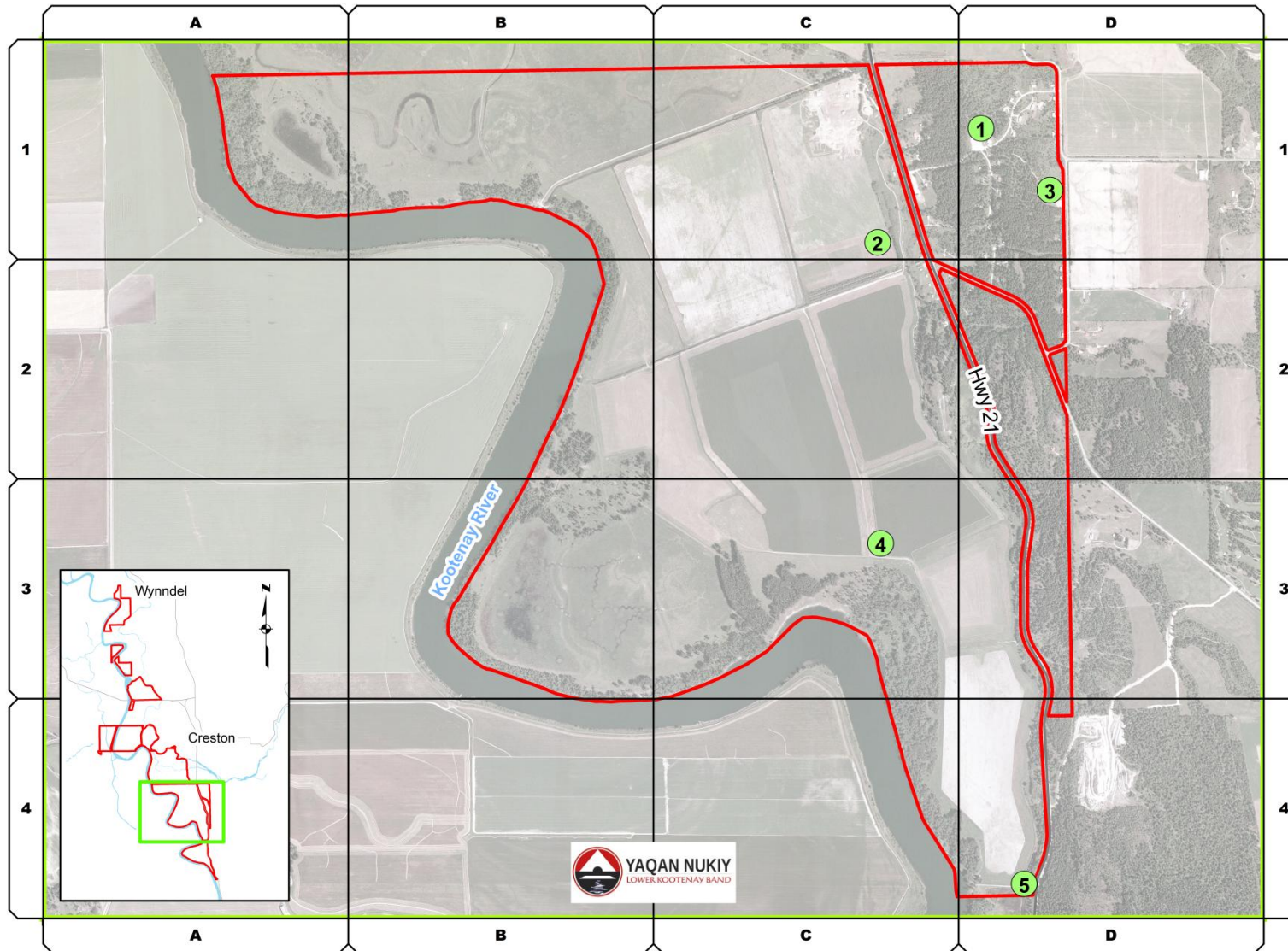
Lower Kootenay Band IR2



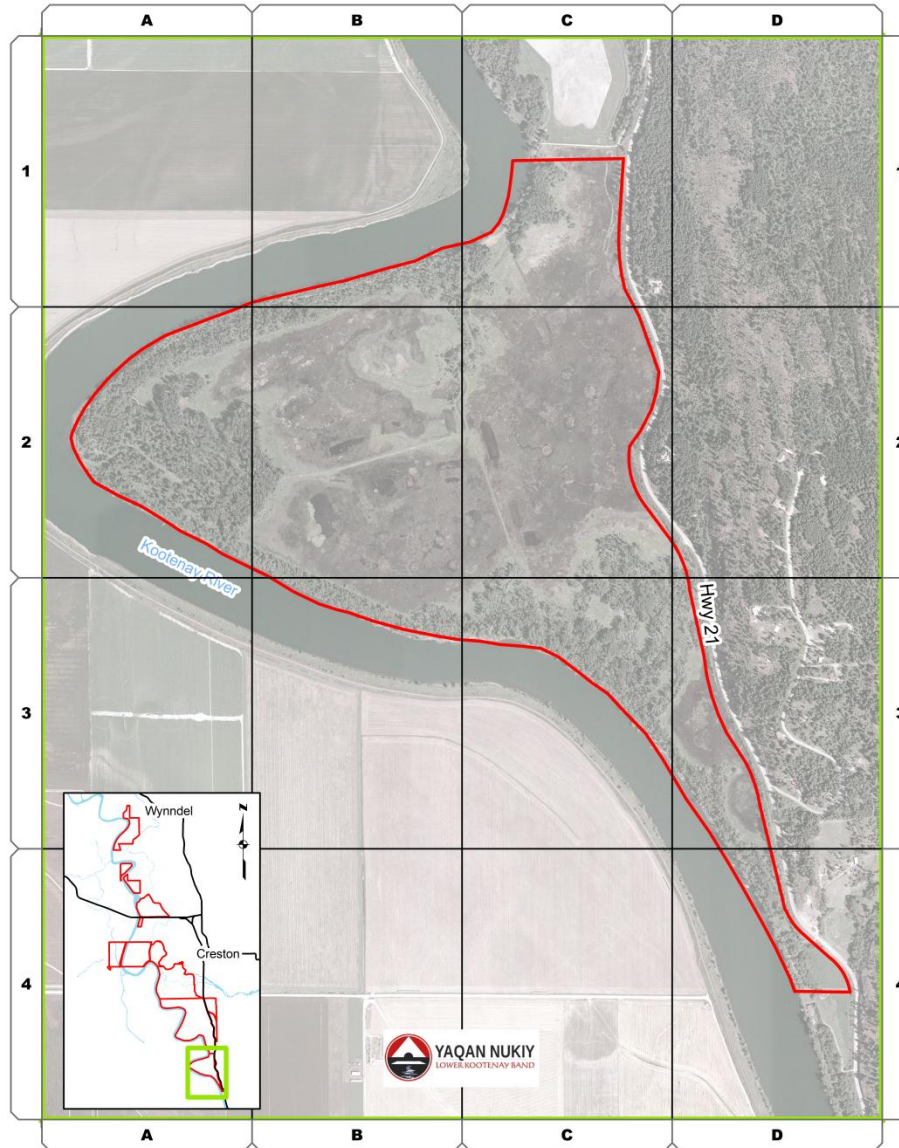
Lower Kootenay Band IR1C



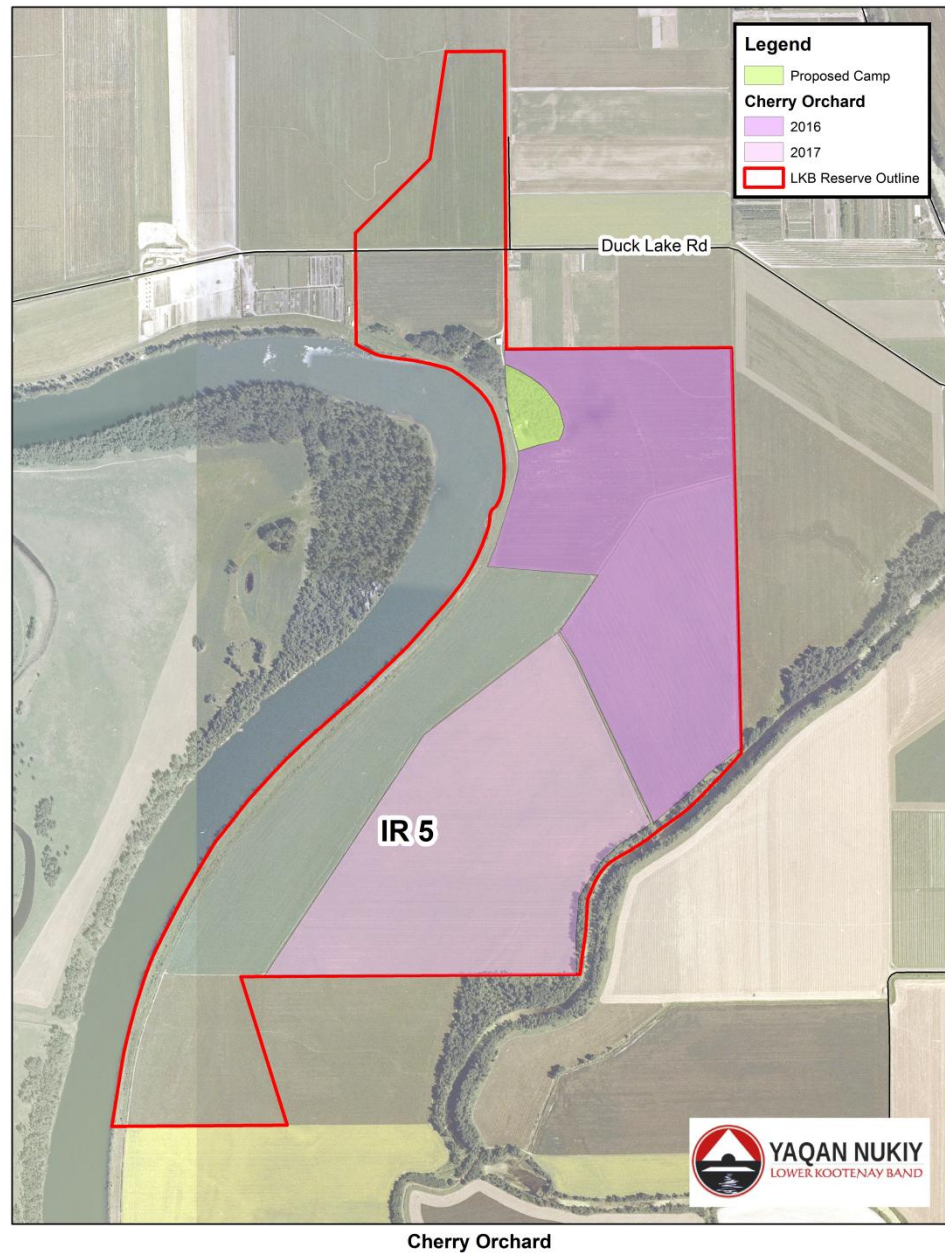
Lower Kootenay Band IR1B



Lower Kootenay Band IR1



Lower Kootenay Band IR1A





Cenotaph Park